



Steel Industry Lubricants Lubchemicals

Speciality Lubricants for Future Technology
Professional Lubrication

Contents

LubC, Hydraulic M	3	LubC, Gear PG	23	LubC, Grease CPlex EP	43
LubC, Hydraulic MZ	4	LubC, Gear TF	24	LubC, Grease CPlex SD	44
LubC, Hydraulic T	5	LubC, ATF	25	LubC, Grease LC	45
LubC, Hydraulic TZ	6	LubC, HTF Plus	26	LubC, Grease LC HD	46
LubC, Hydraulic T Plus	7	LubC, Spin	27	LubC, Grease LC SD	47
LubC, Hydraulic TZ Plus	8	LubC, Vacuum Pump	28	LubC, Grease LC Plex HD	48
LubC, Comp R	9	LubC, WRL	29	LubC, Grease LC Moly HD	49
LubC, Comp R Plus	10	LubC, Chain ST	30	LubC, Grease LC Moly SD	50
LubC, Comp Super R Plus	11	LubC, Grease L	31	LubC, Grease CS Plex	51
LubC, Comp R S	12	LubC, Grease L EP	32	LubC, Grease CS Plex Plus	52
LubC, Comp P	13	LubC, Grease L Plex	33	LubC, Grease PU	53
LubC, Comp PS	14	LubC, Grease L Plex Plus	34	LubC, Grease PU Plus	54
LubC, Turbine T	15	LubC, Grease L Plex EP	35	LubC, Grease PU SPA	55
LubC, Turbine T Plus	16	LubC, Grease L Plex HD	36	LubC, Grease AL Plex OG	56
LubC, Diesel HD	17	LubC, Grease LMoly HD	37	LubC, Paste S Plex 1100	57
LubC, Diesel SD	18	LubC, Grease LMoly Plex HD	38	Equivalents	58
LubC, Diesel Gas LA	19	LubC, Grease L Plex SPA	39		
LubC, Gear HP	20	LubC, Grease C	40		
LubC, Gear HP Plus	21	LubC, Grease C EP	41		
LubC, Gear PA	22	LubC, Grease C SD	42		



About Us

LUBCHEMICALS :THE NUMBER ONE LUBRICANT & CHEMICAL SPECIALIST...

Just meaningless words? Absolutely not! For over 30 years, we have been focusing exclusively on developing and manufacturing of premium chemicals and lubricants. Related to Steel industry, Lubchemical can offer different items such as various types of mineral and synthetic oils involves hydraulic, compressor oils, turbine oils, gear oils, motor oils, heat transfer oils, circulation oils, metal working oils, vaccum pump oils and also specialty greases with different types of thickeners such as Lithium, Lithium Complex, Calcium, Calcium Complex, Calcium Solphanate Complex, Poly Urea, Aluminum Complex and various pastes.

Which product are you looking for?

As an independent manufacturer we can quickly respond to market developments. We keep a close eye on technical trends. In addition, we develop custom-made solutions for many specific requirements our customers have.

International appeal with a 'German heart'.

Not only Made in Germany, but also compliant with internationally applicable specifications and exported worldwide. Our production are ISO certified to reassure you of our commitment to the highest quality standards.

More than just chemicals & lubricants!

A technical product requires knowledge - knowledge that we are eager to share with you. This is the right place for the best product advice; In addition.



PRGK Co.

Supply and distribution of
special lubricants in Iran

LUBCHEMICALS

IBL
JBL
UL
UL





LubC, Hydraulic M

LubC, Hydraulic M is a premium quality multi – purpose lubricating oil, based on group II base stock, designed for use in hydraulic systems in industrial and mobile services, circulating systems and where R&O type of oils are required. Also blended from high – quality base stocks and stabilized zink additive system , supporting the performance requirements of DIN 51524 part1 (HM).

▪ **Viscosity Index (approx.)**

105

▪ **Base Oil Vis. @ 40 °C**

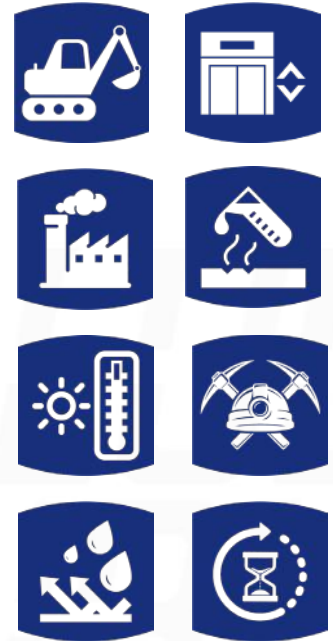
15 :14.4	22 : 22	32 :33
46 :46.5	68 :68	100 :101

▪ **Pour Point / Flash Point °C**

15 : -30 / 210	22 : -30 / 215	32 : -30 / 225
46 : -30 / 230	68 : -24 / 237	100 : -24 / 245

▪ **ISO VG**

15 / 22 / 32 / 46 / 68 / 100



Manufactured under Germany technology license



LubC, Hydraulic MZ

LubC, Hydraulic MZ is an ash less (Zinc-free) high – performance hydraulic fluid, based on group II base stock, designed for use in hydraulic systems containing silver or silver – plated parts, operating under medium pressure and requiring medium degree of load-carrying capability and also suitable for hydraulic pumps and hydraulic systems of excavators, cranes, and hydrostatic drives, subjected to outdoor operating conditions .

▪ **Viscosity Index (approx.)**

105

▪ **Base Oil Vis. @ 40 °C**

15 : 15	22 : 22.6	32 : 33.6
46 : 46.3	68 : 68.4	100 : 100.5

▪ **Pour Point / Flash Point °C**

15 : -30 / 210	22 : -30 / 215	32 : -30 / 225
46 : -30 / 230	68 : -24 / 237	100 : -27 / 245

▪ **ISO VG**

15 / 22 / 32 / 46 / 68 / 100



Manufactured
under Germany
technology license





LubC, Hydraulic T

LubC, Hydraulic T is a High performance , anti - wear hydraulic fluid based on group II base stock, It is designed for use in hydraulic systems operating under high pressures and requiring high degree of load – carrying capability. Also suitable for most hydraulic pumps and hydraulic systems of excavators, cranes, and hydrostatic drives subjected to most severe outdoor operating conditions .

▪ **Viscosity Index (approx.)**

142

▪ **Base Oil Vis. @ 40°C**

15 : 15.5	22 : 22	32 : 33.1
46 : 45	68 : 68	100 : 100

▪ **Pour Point / Flash Point °C**

15 : -39 / 200	22 : -39 / 210	32 : -33 / 215
46 : -33 / 220	68 : -30 / 227	100 : -30 / 235

▪ **ISO VG**

15 / 22 / 32 / 46 / 68 / 100



Manufactured
under Germany
technology license





LubC, Hydraulic TZ

LubC, Hydraulic TZ is an ash less (Zinc-free) high – performance hydraulic fluid based on group II base stock, It is designed for use in hydraulic systems containing silver or silver – plated parts, operating under high pressure and requiring high degree of load-carrying capability and also suitable for hydraulic pumps and hydraulic systems of excavators, cranes, and hydrostatic drives, subjected to most severe outdoor operating conditions.

▪ Viscosity Index (approx.)

143

▪ Base Oil Vis. @ 40 °C

15 : 15.4	22 : 22.3	32 : 33
46 : 44.9	68 : 68	100 : 99.6

▪ Pour Point / Flash Point °C

15 : -39 / 200	22 : -39 / 210	32 : -33 / 215
46 : -33 / 220	68 : -30 / 227	100 : -30 / 235

▪ ISO VG

15 / 22 / 32 / 46 / 68 / 100



Manufactured under Germany technology license



LubC, Hydraulic T Plus

LubC, Hydraulic TPlus is a High performance, anti - wear hydraulic fluid based on group II&III base stocks, It is designed for use in hydraulic systems operating under high pressures and requiring high degree of load – carrying capability as well as suitable for most hydraulic pumps and hydraulic systems of excavators, cranes, and hydrostatic drives subjected to most severe outdoor operating conditions.

Viscosity Index (approx.)

160

Base Oil Vis. @ 40 °C

15 : 15.8	22 : 22	32 : 33.6
46 : 44	68 : 68	100 : 100

Pour Point / Flash Point °C

15 : -42 / 164	22 : -42 / 175	32 : -42 / 170
46 : -42 / 240	68 : -36 / 235	100 : -30 / 246

ISO VG

15 / 22 / 32 / 46 / 68 / 100



Manufactured under Germany technology license 



LubC, Hydraulic TZ Plus

LubC, Hydraulic TZ Plus is an ash less (Zinc-free) high – performance hydraulic fluid based on group II&III base stocks, It is designed for use in hydraulic systems containing silver or silver – plated parts, operating under high pressure and requiring high degree of load-carrying capability and also suitable for hydraulic pumps and hydraulic systems of excavators, cranes, and hydrostatic drives, subjected to most severe outdoor operating conditions.

▪ Viscosity Index (approx.)

160

▪ Base Oil Vis. @ 40 °C

15 :15.1	22 :22.4	32 :33.6
46 :46.3	68 : 68.6	100 : 100

▪ Pour Point / Flash Point °C

15 : -42 / 164	22 : -42 / 206	32 : -42 / 208
46 : -42 / 220	68 : -42 / 224	100 : -39 / 237

▪ ISO VG

15 / 22 / 32 / 46 / 68 / 100



Manufactured
under Germany
technology license





LubC, Comp R

LubC, Comp R is based on high grade specially selected solvent refined base oils, This compressor oil is a dispersant type oil intended primarily for oil-flooded rotary sliding-vane and screw-type compressors with relative high operating temperatures. It is very effective in preventing from foam and suitable for rotary vane screw compressors (Max-change over time up to 4000 hr.)

• Viscosity Index

32 : 105 46 : 105 68 : 104

• Base Oil Vis. @ 40 °C

32 : 32 46 : 43.44 68 : 68.6

• Pour Point / Flash Point °C

32 : -30 , 210
 46 : -30 , 216
 68 : - 30 , 220

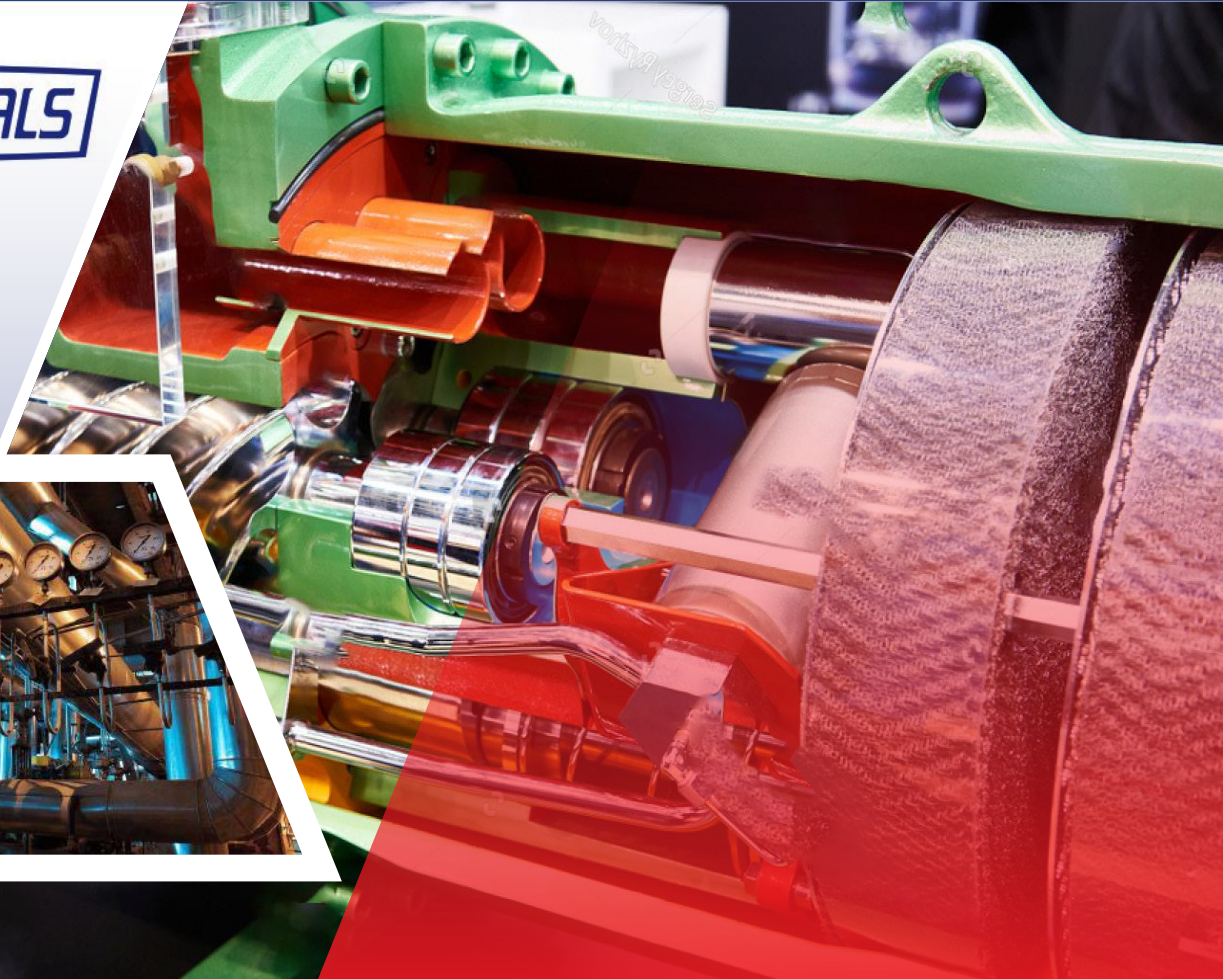
• ISO VG

32 / 46 / 68



Manufactured
 under Germany
 technology license





LubC, Comp R Plus

LubC, Comp R Plus is formulated using hydro cracked / iso dewaxed hydrocarbon base fluids. Designed specifically for use in oil flood lubricated positive displacement rotary compressor. It will extend drain intervals up to 2 times longer than conventional mineral oils. (Max-change over time up to 6000 hr.)

Viscosity Index

32 : 127 46 : 124 68 : 124

Base Oil Vis. @ 40 °C

32 : 32.2 46 : 46.6 68 : 68.5

Pour Point / Flash Point °C

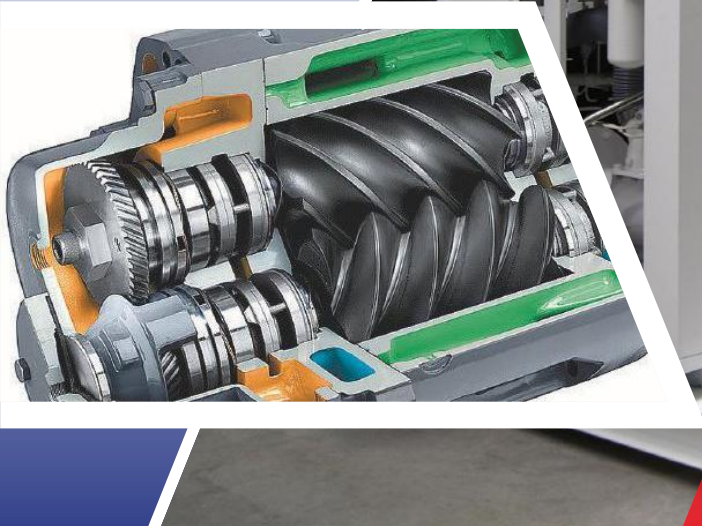
32 : -36 , 236
46 : -33 , 240
68 : -33 , 244

ISO VG

32 / 46 / 68



Manufactured under Germany technology license



LubC, Comp Super R Plus

LubC, Comp Super R Plus is a heavy duty, based on synthetic PAO & group III base stock compressor oil, containing special oxidation and rust inhibitors. It is designed specifically for use in oil flood lubricated positive displacement rotary compressor. It will extend drain intervals up to 2.5 times longer than conventional mineral oils. (Max-change over time up to 8000 hr.)

▪ Viscosity Index

32 : 126 46 : 130 68 : 134

▪ Base Oil Vis. @ 40 °C

32 : 32.2 46 : 46.6 68 : 68.5

▪ Pour Point / Flash Point °C

32 : -39 , 236
46 : -36 , 240
68 : -39 , 244

▪ ISO VG

32 / 46 / 68



Manufactured under Germany technology license 



LubC, Comp R S

LubC, Comp RS is formulated from synthetic base fluid utilizing synthetic hydrocarbon (PAO) with specially developed additive systems. Designed specifically for use in oil flood lubricated positive displacement rotary compressor. It will extend drain intervals up to 3 times longer than conventional mineral oils. (Max-change over time up to 12000 hr.)

▪ Viscosity Index		
32 : 140	46 : 140	68 : 135
▪ Base Oil Vis. @ 40 °C		
32 : 32.2	46 : 46.4	68 : 68.2
▪ Pour Point / Flash Point °C		
32 : -45	,	236
46 : -42	,	246
68 : -42	,	249
▪ ISO VG		
32 / 46 / 68		



Manufactured under Germany technology license 



LubC, Comp P

LubC, Comp P is a premium performance ash less air compressor lubricants intended for the lubrication of severe duty reciprocating air compressors. It is formulated with high quality mineral base oils and a high performance additive system designed to provide exceptional equipment protection and reliability for compressors operating under mild to heavy duty conditions.

• Viscosity Index

68 : 55 100 : 51 150 : 53

• Base Oil Vis. @ 40 °C

68 : 69 100 : 101 150 : 153

• Pour Point / Flash Point °C

68 : -36 , 235
100 : -33 , 240
150 : -30 , 245

• ISO VG

68 / 100 / 150



Manufactured
under Germany
technology license 



LubC, Comp PS

LubC, Comp PS is a supreme performance air compressor lubricant primarily intended for the lubrication of severe duty reciprocating air compressors. It is formulated with specific designed synthetic base oil and a high technology additive system that assures exceptional equipment protection and reliability for compressors operating under conditions where mineral oil based products are not meeting expectations.

Viscosity Index		
68 : 95	100 : 82	150 : 88
Base Oil Vis. @ 40 °C		
68 : 68	100 : 100	150 : 150
Pour Point / Flash Point °C		
68 : -51	, 257	
100 : -39	, 266	
150 : -30	, 242	
ISO VG		
68 / 100 / 150		



Manufactured under Germany technology license



LubC, Turbine T

LubC, Turbine T is a high quality inhibited turbine oil which contains highly effective rust, oxidation and foam inhibitors. It is formulated to have good air release properties and good oxidation stability. It is suitable for hydroelectric, steam and hydraulic turbines operating under all service conditions as well as centrifugal, rotary and reciprocating compressors, turbo-blowers and centrifugal pumps.

▪ Base Oil Vis. @ 40 °C

32 :32 46 :46 68 :67.6 100 :101

▪ Pour Point / Flash Point °C

32 : -30 / 215 46 : -27 / 220 68 : -24 / 220 100 : -25 / 240

▪ Viscosity Index

32 : 105 46 : 105 68 : 105 100 : 101

▪ RPVOT Test Result

> 900

▪ ISO VG

32 / 46 / 68 / 100



Manufactured
under Germany
technology license 



LubC, Turbine T Plus

LubC,Turbine TPlus is a premium quality inhibited turbine oil which Contains highly effective rust, oxidation and foam inhibitors. It is formulated to have good air release properties and good oxidation stability. It is suitable for Hydroelectric, Steam and hydraulic turbines operating under all service conditions as well as centrifugal, rotary and reciprocating compressors, turbo-blowers and centrifugal pumps.

▪ Base Oil Vis. @ 40 °C			
32 :32	46 :46	68 :67	100 :100
▪ Pour Point / Flash Point °C			
32 : -36 / 237	46 : -33 / 240		
68 : -33 / 250	100 : -33 / 255		
▪ Viscosity Index			
32 : 127	46: 124	68: 124	100 :115
▪ RPVOT Test Result			
> 900			
▪ ISO VG			
32 / 46 / 68 / 100			



Manufactured under Germany technology license



LubC, Diesel HD

LubC, Diesel HD is a semi-synthetic, extra high-performance and long-life heavy duty diesel engine oil (HDEO), specifically developed for use in modern, low emission diesel engines, including those fitted with Exhaust Gas Re-circulation (EGR) systems, which their construction model is after 2004. It is blended from selected base stocks and new generation of high-performance additives.

Viscosity Index

10W30 : 183	10W40 : 153	20W40:141
15W40 : 139	20W50 : 123	

Base Oil Vis. @ 40 °C

10W30 : 80	10W40 : 102	20W40:120
15W40 : 110	20W50 : 170	

Pour Point °C

10W30 : -42	10W40 : -36	20W40:-33
15W40 : -36	20W50 : -33	



Manufactured
under Germany
technology license





LubC, Diesel SD

LubC, Diesel SD is a semi-synthetic, extra high-performance and long-life severe duty diesel engine oil (HDEO), specifically developed for use in modern, low emission diesel engines, including those fitted with Exhaust Gas Re-circulation (EGR) systems which their construction model is after 2004. It is blended from selected base stocks and new generation of high – performance additives.

▪ Viscosity Index

15W40 : 125

▪ Base Oil Vis. @ 40 °C

15W40 : 120

▪ Pour Point °C

15W40 : -33



Manufactured
under Germany
technology license 



LubC, Diesel Gas LA

LubC, Diesel Gas LA is an advanced performance, premium quality, bright stock free, low ash, dispersant/detergent type engine oil. It provides outstanding oxidation and nitration resistance which minimize the build up insoluble and help provides long oil and filter life. It is particularly suited for four-stroke and selected two – stroke gas engines requiring good low temperature start ability.

- **Base Oil Vis. @ 40 °C**
142
- **Pour Point / Flash Point °C**
- 21 / 230
- **Viscosity Index**
106
- **Sulfated Ash , m %**
0.59
- **Base No, D 2896, mg KOH/g**
7.3



Manufactured under Germany technology license



LubC, Gear HP

LubC, Gear HP is an advanced industrial gear oil, designed primarily for the lubrication of heavy duty industrial gears. Its high load carrying capacity and anti-friction characteristic combine to offer superior performance in gears as well as suitable for lubrication of bearing and other components in circulating and splash lubricated systems. The lubricant can be used in gearboxes and power transmission systems, industrial machinery such as rotary kilns, conveyors, cranes, and other heavy equipment that operate under heavy loads.

- **Viscosity Index (approx.)**

95 FZG Test : 12

- **Timken O.K Load (lbs)**

27

- **ISO VG**

68 / 100 / 150 / 220 / 320 / 460 / 680 / 1000



Manufactured
under Germany
technology license 



LubC, Gear HP Plus

LubC, Gear HP Plus is an advanced industrial gear oil, designed primarily for the lubrication of heavy duty industrial gears. Its high load carrying capacity and anti-friction characteristic combine to offer superior performance in gears as well as suitable for lubrication of bearing and other components in circulating and splash lubricated systems. The lubricant can be used in gearboxes and power transmission systems, industrial machinery such as rotary kilns, conveyors, cranes, and other heavy equipment that operate under heavy loads.

- Viscosity Index (approx.)

106

- FZG Test

> 12

- Timken O.K Load (lbs)

27

- ISO VG

220 / 320 / 460



Manufactured
under Germany
technology license 



LubC, Gear PA

LubC, Gear PA is a Poly Alpha Olefin based advanced synthetic heavy duty industrial gear oil as well as particularly suited for gear applications exposed to extreme service conditions, all type of enclosed gear, drives, bearings, including plain rolling elements and anti friction types, applications requiring High micro-pitting resistance. The lubricant also can be used in High performance industrial gearboxes, power transmission systems are suitable for rotary, electric arc furnaces and conveyors.

- FZG Test

> 12

- Timken O.K Load (lbs)

> 67

- ISO VG

32 / 46 / 68 / 100 / 150 / 220 / 320 / 460 / 680 / 1000



Manufactured
under Germany
technology license 

LubC, Gear PG

LubC, Gear PG is a Poly Alkaline Glycol based on advanced synthetic heavy-duty industrial gear oil as well as particularly suited for gear applications exposed to extreme service conditions, all type of enclosed gear, drives, bearings, including plain rolling elements and anti friction types, applications requiring High micro-pitting resistance. The lubricant also can be used in high-performance industrial gearboxes, power transmission systems in rotary, induction furnaces are suitable.

- FZG Test

> 12

- Timken O.K Load (lbs)

> 70

- ISO VG

100 / 150 / 220 / 320 / 460 / 680



Manufactured
under Germany
technology license 



LubC, Gear TF

Multi-grade gear oil prepared from high-quality mineral oils with advanced additives for lubrication under very difficult conditions such as high speed / sudden pressures, high speeds / low torque and low speeds / high torque in a wide range of car manual transmissions, axles and The differential is designed. It is recommended to use this product in light, heavy trucks and off-road equipment such as mines, agriculture and construction activities.

▪ **Viscosity Index**

75W80 : 165	75W90 : 178	80W90 : 108
85W90 : 103	85W140 : 98	

▪ **Base Oil Vis. @ 40 °C**

75W90 : 53.6	75W90 : 85.6	80W90 : 138
85W90 : 172	85W140 : 435	

▪ **Pour Point °C**

75W80 : -48	75W90 : -45	80W90 : -39
85W140 : -36	85W140 : -15	



Manufactured under Germany technology license 



LubC, ATF

LubC, ATF is a synthetic high performance automatic transmission fluid. Formulated by advanced additives for supporting requirements of general Motors (DEXRON-III H/M) and Ford, along with Allison C4 applications and Caterpillar TO-2. This product is suitable for use in both passenger cars and light trucks as well as guarantees perfect operation of hydraulic transmissions under extreme operating conditions and large temperature fluctuations.

▪ Viscosity Index

II : 168 III : 186

▪ Base Oil Vis. @ 40 °C

II : 35.5 III : 35.5

▪ Pour Point °C

II : -42 III : -48

▪ SAE Grade

75 W



Manufactured
under Germany
technology license 



LubC, HTF Plus

LubC, HTF Plus is a semi-synthetic premium quality heat transfer fluid used in indirectly heated closed transfer systems where maximum bulk oil temperature is 350°C. This product formulated from carefully selected highly refined mineral oils fortified with high temperature oxidation inhibitors. Lub C HTF Plus benefits from excellent thermal cracking stability and high specific thermal conductivity.

Viscosity Index		
32 : 137	46 : 128	68 : 121
Base Oil Vis. @ 40 °C		
32 : 32.8	46 : 46.6	68 : 67.5
Pour Point / Flash Point °C		
32 : -33 / 242	46 : -30 / 250	68 : -30 / 255
Operating Temp. of Bulk °C Oil & Max. Oil Film Temp. °C		
340 / 350		
Total Acid Number		
0.01 Max		
ISO VG :		
32 / 46 / 68		



Manufactured under Germany technology license



LubC, Spin

LubC, Spin is formulated from highly refined mineral oil, anti-wear agents and rust and oxidation inhibitors. This product is suitable for bearings and bearings of rotating equipment in industrial machinery such as rotary furnaces, as well as fans and electric motors of blast furnaces and electric arc and casting processes that work at high speed and severe temperature conditions.

▪ **Base Oil Vis.@ 40 °C**

5: 5	10: 9.81	22: 22	32: 31.5
46: 45	68: 68	100: 101	150: 148
220: 218	320: 320	460: 470	680: 675

▪ **Viscosity Index (Approx)**

95

▪ **Rust Test , Distilled Water**

Pass

▪ **Acid Number**

0.0

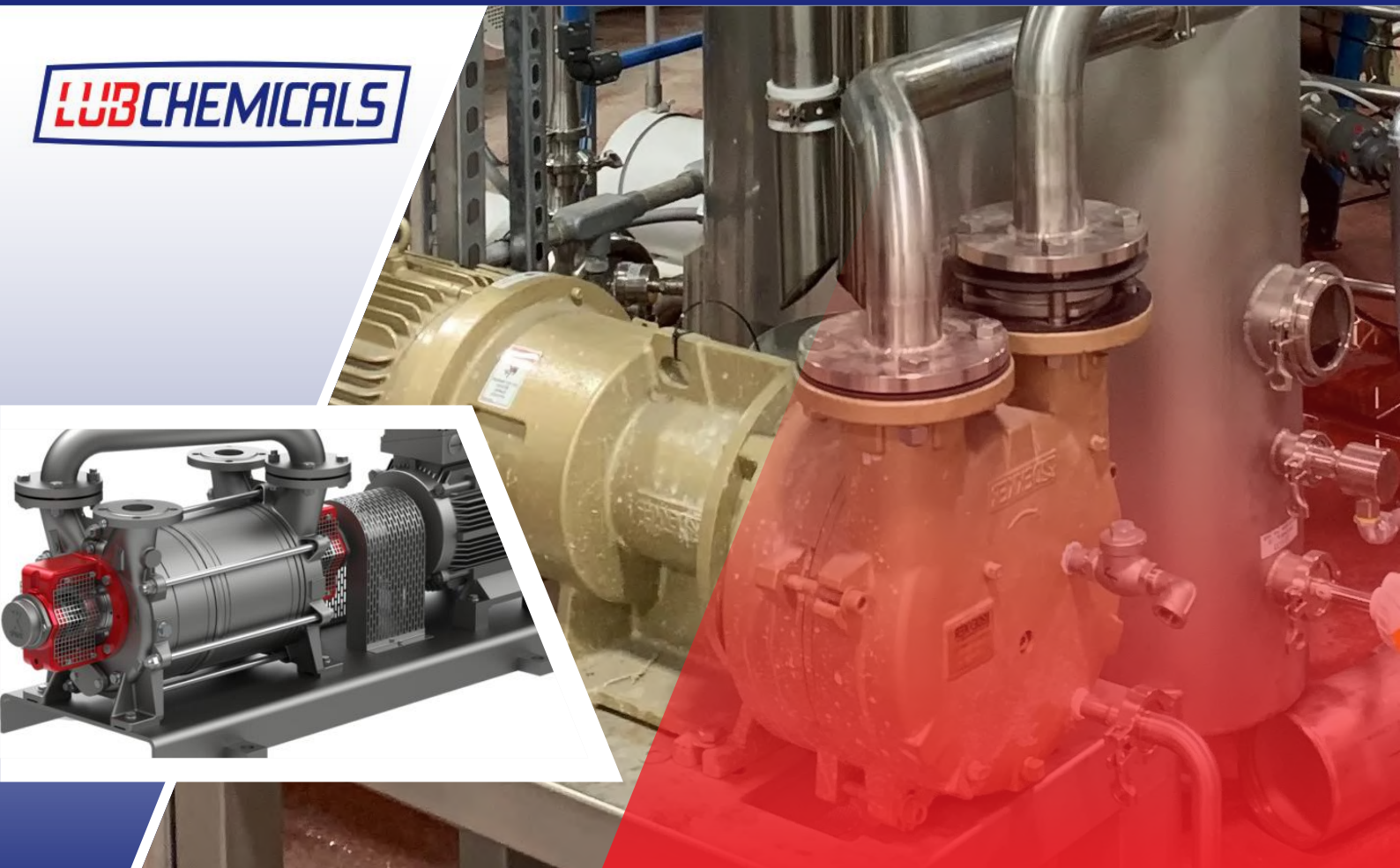
▪ **ISO VG**

5/10/22/32/46/68/100/150/220/320/460/680



Manufactured
under Germany
technology license





LubC, Vacuum Pump

LubC, Vacuum Pump is a premium performance, mineral based vacuum pump oil containing a special oxidation inhibitor and a rust inhibitor. It is designed specifically for use in deep vacuum pumps. Through its use of vacuum-compatible additives, protects your pump and extends its life expectancy.

• Viscosity Index (Approx)

32: 115	46: 115
68: 115	100: 115

• Pour Point / Flash Point °C

32: - 36/225	46: - 36/245
68: -30/265	100: -30/265

• ISO VG

32/46/68/100



Manufactured
under Germany
technology license 

LubC, WRL

LubC, WRL is a semi-fluid high performance, oil-based rust preventive intended to serve as a wire rope lubricant and to prevent rust and corrosion under operating and storage conditions. It contains solid lubricants and chemically active EP additives and excellent film forming properties and works well between the strands of wire rope, providing excellent lubrication during flexing. This characteristic reduces wear and improves life.

- **Thickener**

AL Complex

- **Base Oil**

Mineral

- **Service Temp. °C**

-20°C to +200°C (Max +250°C)

- **NLGI Grade**

0/0-00/00



Manufactured
under Germany
technology license 



LubC, Chain ST

lubC, Chain ST is a fully synthetic, silicone-free high performance lubricant based on saturated complex esters with high thermal stability and a special additive composition to improve ageing, corrosion and wear protection. Preferably used for the lubrication of thermally highly loaded conveyor and driving chains in kilns, driers and other similar equipment.

- **Base Oil Vis. @ 40 °C**

250

- **Pour Point / Flash Point °C**

- 45 / ≥ 255

- **Base Oil**

Ester

- **Viscosity Index**

121

- **Service temperature**

up to +250°C

- **ISO VG**

250



Manufactured
under Germany
technology license 

LubC, Grease L

Grease made on the basis of lithium, high-quality base oil and additives has anti-oxidation, anti-corrosion and anti-wear properties, which is suitable for general use and transportation machines (such as forklifts, loaders, trucks), bearings and roller bearings of electric motors, electric pumps, fans Furnaces and generators operating under moderate operating conditions (pressure, vibration, and moderate shock), or due to proximity to electric motors, Electropumps, and capacitors should not contain compressible additives, it is suitable.

- **Thickener**

Lithium

- **Base Oil**

Mineral

- **Service Temp. °C**

-30°C to +120°C (Max +130°C)

- **NLGI Grade**

1/2/3

- **4 Ball Weld Load**

2000 N



Manufactured
under Germany
technology license 



LubC, Grease L EP

LubC, Grease LEP is based on premium base oil, using lithium soaps as thickener. The grease contains antioxidants, corrosion inhibitors and EP/AW additives. It is designed for general use in equipment that is involved in high friction and specially for general use in bearings and roller bearings, conveyors, conveyor belts, and cold rolling lines that operate under harsh working conditions (pressure, vibration, and high shock).

- **Thickener**

Lithium

- **Base Oil**

Mineral

- **Service Temp. °C**

-20°C to +120°C (Max +130°C)

- **NLGI Grade**

000 / 00 / 0 / 1 / 2 / 3

- **4 Ball Weld Load**

2600 N



Manufactured
under Germany
technology license





LubC, Grease LPlex

Grease produced on the basis of lithium complex, high-quality mineral base oil with European additive without EP, which can be used in bearings under high speed and load, conveyor equipment, rolling machines, heavy goods vehicles and generators.

- **Thickener**

Lithium Complex

- **Base Oil**

Mineral

- **Service Temp. °C**

-30°C to +160°C (Max +200°C)

- **NLGI Grade**

1/2/3

- **Dropping Point**

260 <



Manufactured
under Germany
technology license





LubC, Grease LPlex Plus

Grease produced on the basis of lithium complex, high-quality mineral base oil with European additive without EP, which can be used in bearings under high speed and load, conveyor equipment, rolling machines, heavy goods vehicles and generators.

▪ **Thickener**

Lithium Complex

▪ **Base Oil**

Mineral

▪ **Service Temp. °C**

-30°C to +180°C (Max +200°C)

▪ **NLGI Grade**

1/2/3

▪ **Dropping Point**

260<



Manufactured
under Germany
technology license 



LubC, Grease LPlex EP

LubC, Grease LPlexEP is mineral oil based lithium complex soap thickened grease, containing performance additives. It is suitable for use in wheel and other bearings and as a multipurpose grease for trucks, buses and construction plant such as bulldozers, scrapers, loading shovels and dump trucks where it will give outstanding performance. This type of grease can be used in bearings under high speed and high load, hot and cold rolling lines.

- **Thickener**

Lithium Complex

- **Base Oil**

Mineral

- **Service Temp. °C**

-30°C to +160°C (Max +200°C)

- **NLGI Grade**

1/2/3

- **4 Ball Weld Load**

2800 N



Manufactured
under Germany
technology license





LubC, Grease LPlEx HD

LubC, Grease LPlEx HD is a mineral oil based lithium complex soap thickened grease, containing performance additives. It is suitable for use in wheel and other bearings as well as a multipurpose grease for trucks, buses and construction plant such as bulldozers, scrapers, loading shovels and dump trucks. It has good performance in bearings under very heavy loads and high temperatures, such as hot rolling lines, rotary furnaces, and conveyor systems.

- **Thickener**

Lithium Complex

- **Base Oil**

Mineral

- **Service Temp. °C**

-20°C to +140°C (Max +220°C)

- **NLGI Grade**

1/2/3

- **4 Ball Weld Load**

3000 N



Manufactured
under Germany
technology license 



LubC, Grease L Moly HD

LubC, Grease L Moly HD is a premium quality multi-purpose lithium grease based on mineral oil suitable for use in all anti-friction and plain bearings subjected to high load and shock loading conditions. The incorporation of %3 Molybdenum Disulfide imparts a high degree of wear protection as well as suitable for use in industrial equipment, trucks and construction plant and particularly in addition to being used in all simple bearings and conditions that are exposed to sudden and high loads, conveyor equipment and rotating machinery such as rotary furnaces and rolling lines that need protection against wear.

- **Thickener**

lithium + MOS2

- **Base Oil**

mineral

- **GRADE NLGI**

2/3

- **Service Temp. °C**

(-20 ~ 120) (MAX +130)

- **4 Ball Weld Load**

2600 N



Manufactured
under Germany
technology license 



LubC, Grease L Plex Moly HD

LubC, Grease Moly Plex HD is a premium quality multi-purpose lithium complex grease based on mineral oil suitable for use in all anti-friction and plain bearings subjected to high load and shock loading conditions. The incorporation of %5 Molybdenum Disulfide imparts a high degree of wear protection as well as suitable for use in industrial equipment, trucks and construction plant and particularly in bearings and bearings under very heavy temperature and load and low speed, conveyor equipment and rotating machinery such as rotary furnaces and rolling lines.

- **Thickener**

Lithium Complex + MOS₂

- **Base Oil**

Mineral

- **Service Temp. °C**

-20°C to +140°C (Max +200°C)

- **NLGI Grade**

2/3

- **4 Ball Weld Load**

3600 N



Manufactured
under Germany
technology license 



LubC, Grease L Plex SPA

Synthetic lithium complex grease, which is designed for various lubrication applications in various operating conditions, especially in cases where the operating temperature is high and the use of conventional lithium greases is limited, forms a stable lubricating film that is resistant to moisture, temperature changes and pollution. It is durable and hence reduces the cost of maintenance, also in bearings under very high speed and temperature and moderate load such as casting and hot rolling lines, furnace heaters and freight cars. Heavy ones are used in very difficult conditions.

- **Thickener**

Lithium Complex

- **Base Oil**

Synthetic

- **NLGI GRADE**

1/2/3

- **Service Temp. °C**

(-20 ~140) (MAX +200)

- **4 Ball Weld Load**

3600N



Manufactured
under Germany
technology license





LubC, Grease C

Grease produced on the basis of calcium and high-quality mineral base oil, which shows good performance due to its high resistance to water and protection of parts against corrosion, and in general, industrial applications that involve water and air humidity. The use of this lubricant is recommended in bearings, conveyor equipment, rolling lines, and heavy vehicles that work under moderate humidity and moderate temperatures.

- **Thickener**

Calcium

- **Base Oil**

Mineral

- **Service Temp. °C**

-20°C to +70°C (Max +80°C)

- **NLGI Grade**

2/3



Manufactured
under Germany
technology license 

LubC, Grease C EP

LubC, Grease C EP is a premium quality, water resistant anhydrous calcium grease for use in industrial and marine applications where the presence of water and humid atmospheres can effect lubricating performance and be detrimental to the protection of parts from corrosion. The use of this lubricant is recommended in bearings, conveyor equipment, cold rolling lines, and heavy vehicles that operate under harsh working conditions, high humidity, and moderate temperatures.

- **Thickener**

Anhydrous Calcium

- **Base Oil**

Mineral oil / Polymer

- **Service Temp. °C**

-30°C to +120°C (Max +130°C)

- **NLGI Grade**

1/2/3

- **4 Ball Weld Load**

2800 N



Manufactured
under Germany
technology license 



LubC, Grease C SD

LubC, Grease C SD is a premium quality, water resistant anhydrous calcium grease for use in industrial and marine applications where the presence of water and humid atmospheres can effect lubricating performance and be detrimental to the protection of parts from corrosion. The use of this lubricant is recommended in bearings, conveyor equipment, cold rolling lines, and heavy vehicles that operate under harsh working conditions, high humidity, and moderate temperatures.

- **Thickener**

Anhydrous Calcium

- **Base Oil**

Mineral oil / Polymer

- **Service Temp. °C**

-30°C to +120°C (Max +130°C)

- **NLGI Grade**

1 / 2/3

- **4 Ball Weld Load**

3200 N



Manufactured
under Germany
technology license 



LubC, Grease CPlex EP

LubC, Grease CPlex EP is a premium quality, water resistant calcium Complex grease for use in industrial and marine applications where the presence of water and humid atmospheres can effect lubricating performance and be detrimental to the protection of parts from corrosion. This lubricant is used in bearings under heavy load and high humidity, conveyor equipment and rotating machinery such as rotary furnaces and hot and cold rolling lines.

- **Thickener**

Calcium Complex

- **Base Oil**

Mineral

- **Service Temp. °C**

-25°C to +140°C

- **NLGI Grade**

1/2

- **4 Ball Weld Load**

3000 N



Manufactured
under Germany
technology license





LubC, Grease CPlex SD

LubC, Grease CPlex SD is a premium quality, water resistant calcium complex grease for use in industrial and marine applications where the presence of water and humid atmospheres can effect lubricating performance and be detrimental to the protection of parts from corrosion. This lubricant is used in bearings under heavy load and high humidity, conveyor equipment and rotating machinery such as rotary furnaces and hot and cold rolling lines.

- **Thickener**

Calcium Complex

- **Base Oil**

Mineral

- **Service Temp. °C**

-25°C to +160°C (Max +200°C)

- **NLGI Grade**

1/2

- **4 Ball Weld Load**

3200 N



Manufactured
under Germany
technology license





LubC, Grease LC

Premium quality lithium calcium multipurpose grease based on mineral oil and EP/AW additives, suitable for use in bearings and bearings of conveyor equipment, rolling lines, and general machinery operating under light to moderate loads.

- **Thickener**

Lithium Calcium

- **Base Oil**

Mineral

- **NLGI GRADE**

1/2/3

- **Service Temp. °C**

(-20 ~130) (MAX +140)

- **4 Ball Weld Load**

2300 N



Manufactured
under Germany
technology license





LubC, Grease LC HD

It is a quality lithium calcium base grease that has modern polymer technology and has a high level of mechanical stability and adhesion, which is suitable for applications in bearings and bearings under medium to heavy loads, conveyor equipment, cold rolling lines and rotating machinery such as sanders and stone crusher, in hard working conditions are suitable.

- **Thickener**

Lithium Calcium

- **Base Oil**

Mineral

- **NLGI GRADE**

1/2/3

- **Service Temp. °C**

(-20 ~ 130) (MAX +140)

- **4 Ball Weld Load**

2500 N



Manufactured
under Germany
technology license 



LubC, Grease LC SD

It is a quality lithium calcium base grease that has modern polymer technology and has a high level of mechanical stability and adhesion, which is suitable for applications in bearings and bearings under medium to heavy loads, conveyor equipment, cold rolling lines and rotating machinery such as sanders and stone crusher, in hard working conditions are suitable.

- **Thickener**

Lithium Calcium

- **Base Oil**

Mineral

- **NLGI GRADE**

1/1-2/2/3

- **Service Temp. °C**

(-20 ~130) (MAX +140)

- **4 Ball Weld Load**

3000 N



Manufactured
under Germany
technology license





LubC, Grease LC Plex HD

Multi-purpose grease made on the basis of lithium-calcium complex, mineral base oil with high viscosity and anti-oxidation, anti-corrosion, anti-wear and EP additives for bearings and bearings under heavy load, conveyor equipment and rotating machinery such as rotary kilns and cold and hot rolling lines are used in high temperature and pressure conditions.

- **Thickener**

Lithium Calcium Complex

- **Base Oil**

Mineral

- **NLGI GARDE**

1/2/3

- **Service Temp. °C**

(-20 ~ 150) (MAX +220)

- **4 Ball Weld Load**

5500 N



Manufactured
under Germany
technology license 



LubC, Grease LC Moly HD

Premium quality lithium calcium multi-purpose grease based on highly viscous mineral oil and EP/AW additives, suitable for use in all low-speed, friction-modulating rolling bearings subjected to high loads and shocks, incorporating solid lubricants (%3 MoS₂ and graphite) increases the degree of wear protection to ensure performance in boundary lubrication conditions. Stone crushers, screeners, mills, etc. are among the most useful items of this type of grease in the steel industry.

- **Thickener**
Lithium Calcium
- **Base Oil**
Mineral
- **NLGI GRADE**
1/1-2/2
- **Service Temp. °C**
(-20 ~120) (MAX +130)
- **4 Ball Weld Load**
4000 N



Manufactured
under Germany
technology license



LubC, Grease LC Moly SD

Premium quality lithium calcium multi-purpose grease based on highly viscous mineral oil and EP/AW additives, suitable for use in all low-speed, friction-modulating rolling bearings subjected to high loads and shocks, incorporating solid lubricants (%3 MoS₂ and graphite) increases the degree of wear protection to ensure performance in boundary lubrication conditions. Stone crushers, screeners, mills, etc. are among the most useful items of this type of grease in the steel industry.

- **Thickener**

Lithium Calcium

- **Base Oil**

Mineral

- **NLGI GRADE**

1.5/2

- **Service Temp. °C**

(-20 ~120) (MAX +140)

- **4 Ball Weld Load**

4300 N



Manufactured
under Germany
technology license





LubC, Grease CSplex

LubC, Grease CSplex Plus is a calcium sulfonate complex thickened lubricating grease based on mineral oil. The grease contains antioxidants and corrosion inhibitors. Bearings and bearings under heavy load, conveyor belt equipment and rotating machinery such as rotary furnaces and rolling lines and especially in hard working conditions and requiring resistance to wear and high pressure are some of the applications of this grease.

- **Thickener**

Calcium Sulfonate Complex

- **Base Oil**

Mineral

- **Service Temp. °C**

-20°C to +160°C (Max +200°C)

- **NLGI Grade**

1/1.5/2

- **4 Ball Weld Load**

6500 N



Manufactured
under Germany
technology license 



LubC, Grease CSplex Plus

LubC, Grease CSplex Plus is a calcium sulfonate complex thickened lubricating grease based on mineral oil. The grease contains antioxidants and corrosion inhibitors. Bearings and bearings under heavy load, conveyor belt equipment and rotating machinery such as rotary furnaces and rolling lines and especially in hard working conditions and requiring resistance to wear and high pressure are some of the applications of this grease.

- **Thickener**

Calcium Sulfonate Complex

- **Base Oil**

Mineral

- **Service Temp. °C**

-20°C to +160°C (Max +200°C)

- **NLGI Grade**

1/1.5/2

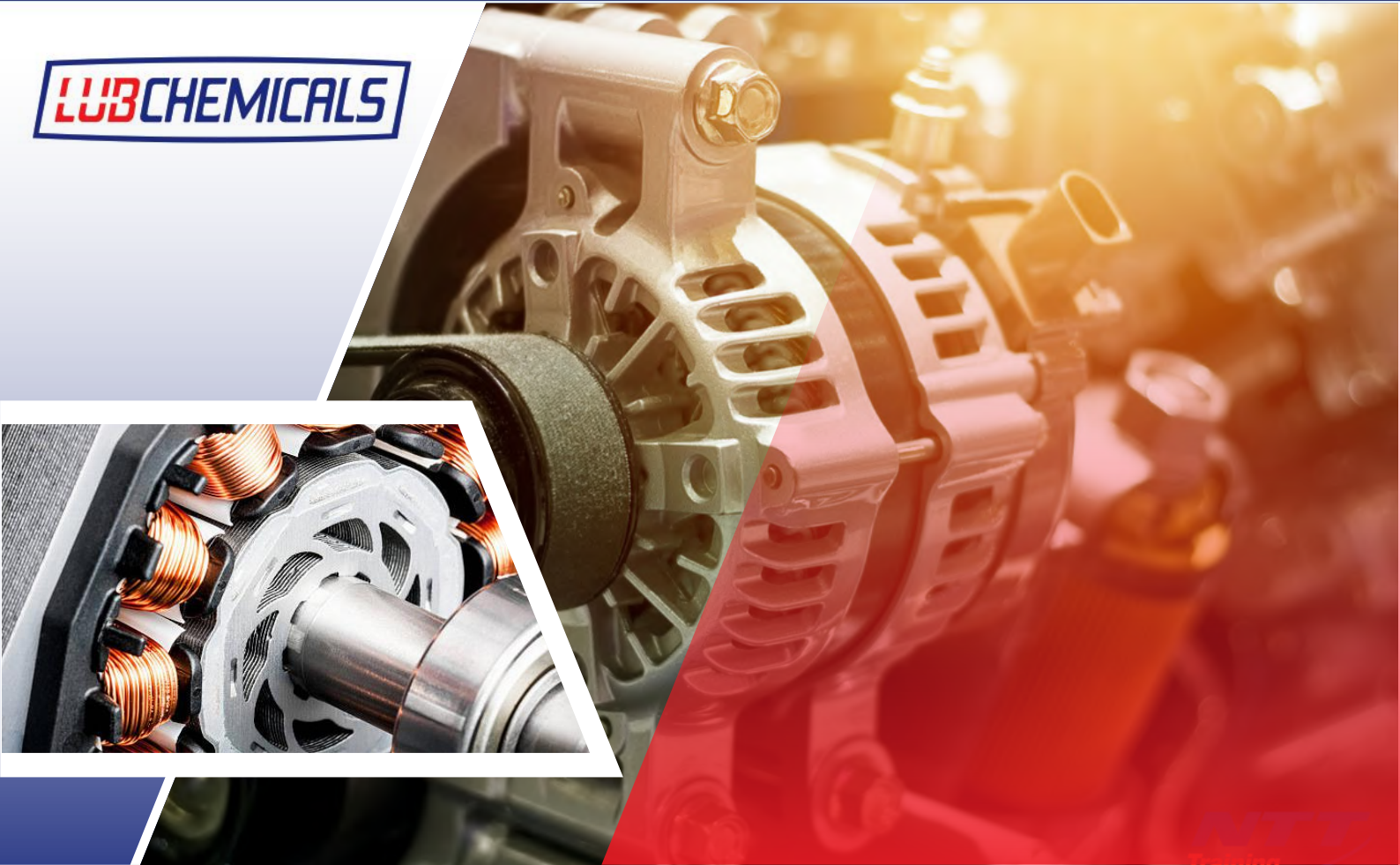
- **4 Ball Weld Load**

6800 N



Manufactured
under Germany
technology license





LubC, Grease PU

Grease made on the basis of polyurea and high-quality mineral base oil, which increases the life, reduces wear and shear stability in parts used in bearings and bearings of electric motors, electric pumps and furnace fans, continuous casting units, hot rolling lines, blast furnaces and An electric arc occurs.

- **Thickener**
Poly urea
- **Base Oil**
Mineral
- **Base Oil VG**
100
- **Service Temp. °C**
-20°C to +200°C (MAX +220)
- **NLGI Grade**
1/1.5/2/3
- **4 Ball Weld Load**
2550 N



Manufactured
under Germany
technology license 



LubC, Grease PU Plus

Grease made on the basis of polyurea and high-quality mineral base oil, which increases the life, reduces wear and shear stability in parts used in bearings and bearings of electric motors, electric pumps and furnace fans, continuous casting units, hot rolling lines, blast furnaces and An electric arc occurs.

- **Thickener**
Poly urea
- **Base Oil**
Mineral
- **Base Oil VG**
100
- **Service Temp. °C**
-20°C to +200°C (MAX +220)
- **NLGI Grade**
1.5/2/3
- **4 Ball Weld Load**
2550 N



Manufactured
under Germany
technology license 



LubC, Grease PU S PA

Polyurea grease contains synthetic hydrocarbon oil (PAO) designed for various lubrication applications in a variety of operating conditions, especially where operating temperatures are high and the use of conventional polyurea greases is limited. This grease is used in continuous casting unit bearings and bearings, hot rolling lines, hot ingot cutting, blast furnaces and electric arc.

- **Thickener**

Poly urea

- **Base Oil**

Synthetic

- **Service Temp. °C**

-30°C to +200°C (MAX +230)

- **NLGI Grade**

1.5/2/3

- **4 Ball Weld Load**

2550 N



Manufactured
under Germany
technology license





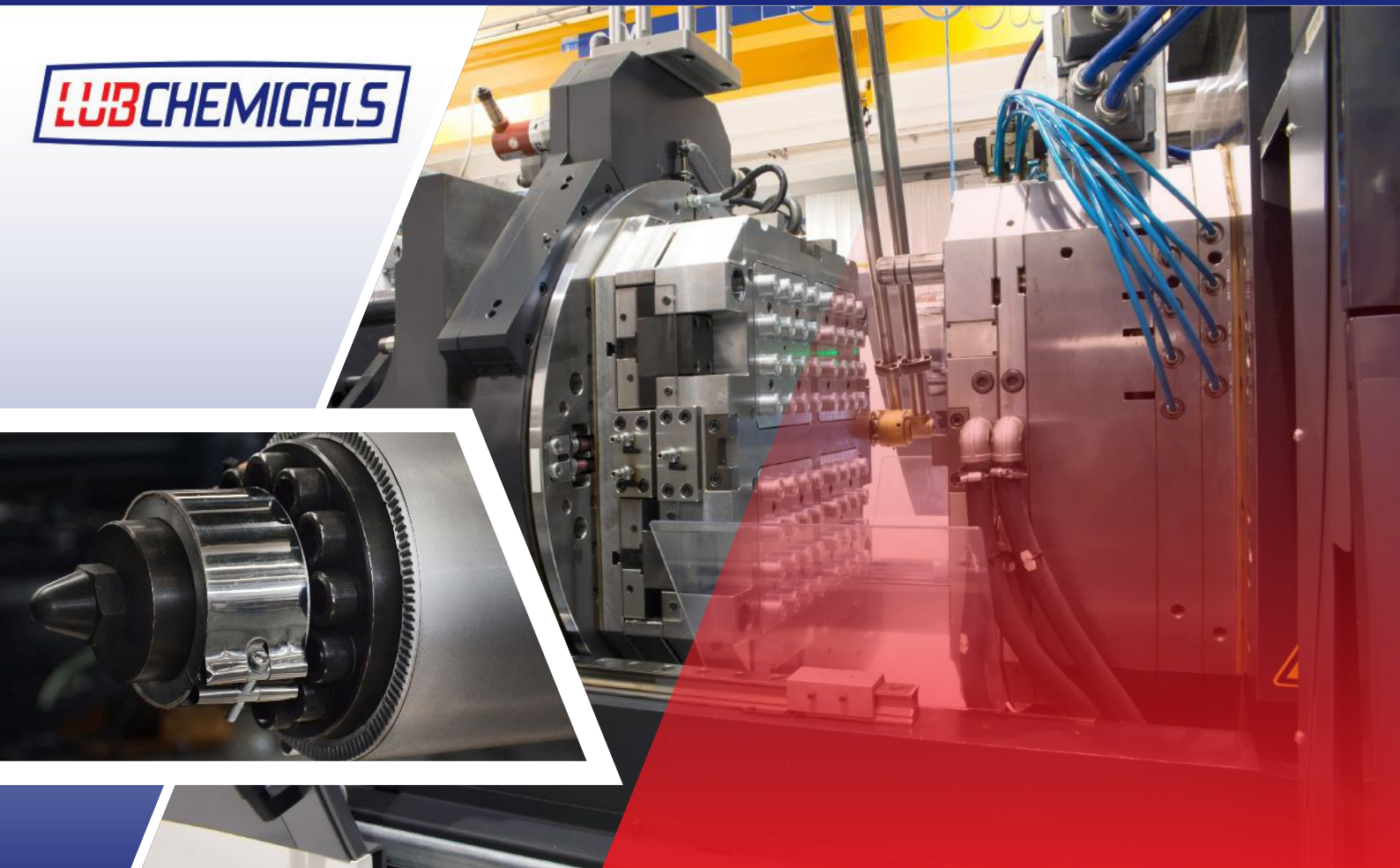
LubC, Grease ALPlex OG

LubC, Grease ALPlex OG is aluminum complex saponified grease based on mineral oil. It contains fine grade graphite as well as designed for automatic spray lubrication of toothed wheels, gear rings, toothed racks and pinions of any kind under high pressure and temperature operations. This grease is recommended for lubrication of open gears and rack and pinion of machines such as rotary kilns, pelletizing discs and rolling lines.

- | | |
|---|--|
| <ul style="list-style-type: none"> ▪ Thickener
AL Complex ▪ Base Oil
Mineral ▪ Service Temp. °C
-20 °C to +160 °C
(Max +200°C) ▪ NLGI Grade | <ul style="list-style-type: none"> 0 / 0-00/ 00 ▪ 4 Ball Weld Load
> 7000 N ▪ FZG Test
> 12 ▪ Base Oil VG
500 , 1000 , 2500 |
|---|--|



Manufactured under Germany technology license



LubC, Paste S Plex 1100

LubC, Paste S Plex 1100 is a high temperature anti seize and brown paste containing composed of high quality base oils, mineral thickener, and metal powder as solid lubricant, suitable for conditions with high pressure and high temperature. It is free of solvents, nickel and chlorine, does not contain any compounds that embattle alloys. It is suitable for after assembling and the initial operation and have to be retightened or disconnected.

- **Thickener**

Thickener +Solids +Metal Powder +Mineral Oil

- **Service Temp. °C**

- 20 °C to +1100 °C

- **NLGI Grade**

1/2



Manufactured
under Germany
technology license

Equivalent

LubChemicals	Equivalent	معادل ایرانی
LubC, Hydraulic M 22	Shell Tellus S2 MX 22	بهران هیدرولیک H22
LubC, Hydraulic M 32	Shell Tellus S2 MX 32	بهران هیدرولیک H32
LubC, Hydraulic M 46	Shell Tellus S2 MX 46	بهران هیدرولیک H46
LubC, Hydraulic M 68	Shell Tellus S2 MX 68	بهران هیدرولیک H68
LubC, Hydraulic M 100	Shell Tellus S2 MX 100	بهران هیدرولیک H100
LubC, Hydraulic M 150	Shell Tellus S2 MX 150	بهران هیدرولیک H150
LubC, Hydraulic MZ 15	Shell Tellus S3 M 15	بهران هیدرولیک HP15
LubC, Hydraulic MZ 22	Shell Tellus S3 M 22	بهران هیدرولیک HP22
LubC, Hydraulic MZ 32	Shell Tellus S3 M 32	بهران هیدرولیک HP32
LubC, Hydraulic MZ 46	Shell Tellus S3 M 46	بهران هیدرولیک HP46
LubC, Hydraulic MZ 68	Shell Tellus S3 M 68	بهران هیدرولیک HP68
LubC, Hydraulic MZ 100	Shell Tellus S3 M 100	بهران هیدرولیک HP100
LubC, Hydraulic T 10	Shell Tellus S2 VX 10	بهران هیدرولیک T10
LubC, Hydraulic T 15	Shell Tellus S2 VX 15	بهران هیدرولیک T15
LubC, Hydraulic T 22	Shell Tellus S2 VX 22	بهران هیدرولیک T22
LubC, Hydraulic T 32	Shell Tellus S2 VX 32	بهران هیدرولیک T32
LubC, Hydraulic T 46	Shell Tellus S2 VX 46	بهران هیدرولیک T46
LubC, Hydraulic T 68	Shell Tellus S2 VX 68	بهران هیدرولیک T68
LubC, Hydraulic T 100	Shell Tellus S2 VX 100	بهران هیدرولیک T100
LubC, Hydraulic TZ 10	Shell Tellus S3 VX 10	-
LubC, Hydraulic TZ 15	Shell Tellus S3 VX 15	-
LubC, Hydraulic TZ 22	Shell Tellus S3 VX 22	-
LubC, Hydraulic TZ 32	Shell Tellus S3 VX 32	-
LubC, Hydraulic TZ 46	Shell Tellus S3 VX 46	-
LubC, Hydraulic TZ 68	Shell Tellus S3 VX 68	-
LubC, Hydraulic TZ 100	Shell Tellus S3 VX 100	-
LubC, Hydraulic TPlus 10	Fuchs Renolin B 10 HVI	بهران هیدرولیک TX10
LubC, Hydraulic TPlus 15	Fuchs Renolin B 15 HVI	بهران هیدرولیک TX15

Equivalent

LubChemicals	Equivalent	معادل ایرانی
LubC, Hydraulic TPlus 22	Fuchs Renolin B 22 HVI	بهران هیدرولیک TX 22
LubC, Hydraulic TPlus 32	Fuchs Renolin B 32 HVI	بهران هیدرولیک TX 32
LubC, Hydraulic TPlus 46	Fuchs Renolin B 46 HVI	-
LubC, Hydraulic TPlus 68	Fuchs Renolin B 68 HVI	بهران هیدرولیک TX 68
LubC, Hydraulic TPlus 100	Fuchs Renolin B 100 HVI	بهران هیدرولیک TX 100
LubC, Hydraulic TZPlus 10	-	-
LubC, Hydraulic TZPlus 15	-	-
LubC, Hydraulic TZPlus 22	-	-
LubC, Hydraulic TZPlus 32	-	-
LubC, Hydraulic TZPlus 46	Fuchs Renolin ZAF 46 MC	بهران هیدرولیک TX 46
LubC, Hydraulic TZPlus 68	-	-
LubC, Hydraulic TZPlus100	-	-
LubC, Comp R 32	Shell Corena S2 R 32	بهران کمپرسور VDL 32
LubC, Comp R 46	Shell Corena S2 R 46	بهران کمپرسور VDL 46
LubC, Comp R 68	Shell Corena S2 R 68	بهران کمپرسور VDL 68
LubC, Comp R 100	Shell Corena S2 R 100	بهران کمپرسور VDL 100
LubC, Comp R Plus 32	Shell Corena S3 R 32	بهران کمپرسور VDL 32
LubC, Comp R Plus 46	Shell Corena S3 R 46	بهران کمپرسور VDL 46
LubC, Comp R Plus 68	Shell Corena S3 R 68	بهران کمپرسور VDL 68
LubC, Comp R Plus 100	Shell Corena S3 R 100	بهران کمپرسور VDL 100
LubC,CompSuperRPlus 32	Shell Corena S4 R 32	بهران کمپرسور PS 32
LubC,CompSuperRPlus 46	Shell Corena S4 R 46	بهران کمپرسور PS 46
LubC,CompSuperRPlus 68	Shell Corena S4 R 68	بهران کمپرسور PS 68
LubC,CompSuperRPlus100	Shell Corena S4 R 100	بهران کمپرسور PS 100
LubC, Comp R S 32	Shell Corena S4 R 32	بهران کمپرسور PS 32
LubC, Comp R S 46	Shell Corena S4 R 46	بهران کمپرسور PS 46
LubC, Comp R S 68	Shell Corena S4 R 68	بهران کمپرسور PS 68
LubC, Comp R S 100	Shell Corena S4 R 100	بهران کمپرسور PS 100

Equivalent

LubChemicals	Equivalent	معادل ایرانی
LubC, Comp P 68	Shell Corena S2 P 68	بهران کمپرسور 68 VDL
LubC, Comp P 100	Shell Corena S2 P 100	بهران کمپرسور 100 VDL
LubC, Comp P 150	Shell Corena S2 P 150	بهران کمپرسور 150 VDL
LubC, Comp P 220	Shell Corena S2 P 220	بهران کمپرسور 220 VDL
LubC, Comp PS 68	Shell Corena S4 P 68	بهران کمپرسور PS 68
LubC, Comp PS 100	Shell Corena S4 P 100	بهران کمپرسور PS 100
LubC, Comp PS 150	Shell Corena S4 P 150	بهران کمپرسور PS 150
LubC, Comp PS 220	Shell Corena S4 P 220	بهران کمپرسور PS 220
LubC,Gear HP 32	Shell Omala S2 GX 32	بهران بردبار 32
LubC,Gear HP 46	Shell Omala S2 GX 46	بهران بردبار 46
LubC,Gear HP 68	Shell Omala S2 GX 68	بهران بردبار 68
LubC,Gear HP 100	Shell Omala S2 GX 100	بهران بردبار 100
LubC,Gear HP 150	Shell Omala S2 GX 150	بهران بردبار 150
LubC,Gear HP 220	Shell Omala S2 GX 220	بهران بردبار 220
LubC,Gear HP 320	Shell Omala S2 GX 320	بهران بردبار 320
LubC,Gear HP 460	Shell Omala S2 GX 460	بهران بردبار 460
LubC,Gear HP 680	Shell Omala S2 GX 680	بهران بردبار 680
LubC,Gear HP 1000	Shell Omala S2 GX 1000	بهران بردبار 1000
LubC,Gear HP Plus 68	Shell Omala F 68	بهران بردبار F 68
LubC,Gear HP Plus 100	Shell Omala F 1Shell Omala F 100	بهران بردبار F 100
LubC,Gear HP Plus 150	Shell Omala F 150	بهران بردبار F 150
LubC,Gear HP Plus 220	Shell Omala F 220	بهران بردبار F 220
LubC,Gear HP Plus 320	Shell Omala F 320	بهران بردبار F 320
LubC,Gear HP Plus 460	Shell Omala F 460	بهران بردبار F 460
LubC,Gear HP Plus 680	Shell Omala F 680	بهران بردبار F 680
LubC,Gear HP Plus 1000	Shell Omala F 1000	بهران بردبار F 1000
LubC,Gear PA 32	Mobil SHC 624	-
LubC,Gear PA 46	Mobil SHC 625	-

Equivalent

LubChemicals	Equivalent	معادل ایرانی
LubC,Gear PA 68	Mobil SHC 626	-
LubC,Gear PA 100	Mobil SHC 627	-
LubC,Gear PA 150	Mobil SHC 629	بهران بردبار PS 150
LubC,Gear PA 220	Mobil SHC 630	بهران بردبار PS 220
LubC,Gear PA 320	Mobil SHC 632	بهران بردبار PS 320
LubC,Gear PA 460	Mobil SHC 634	بهران بردبار PS 460
LubC,Gear PA 680	Mobil SHC 636	بهران بردبار PS 680
LubC,Gear PA 1000	Mobil SHC 639	بهران بردبار PS 1000
LubC,Gear PG 68	Shell Omala S4 WE 68	-
LubC,Gear PG 100	Shell Omala S4 WE 100	بهران بردبار PG100
LubC,Gear PG 150	Shell Omala S4 WE 150	بهران بردبار PG150
LubC,Gear PG 220	Shell Omala S4 WE 220	بهران بردبار PG220
LubC,Gear PG 320	Shell Omala S4 WE 320	بهران بردبار PG320
LubC,Gear PG 460	Shell Omala S4 WE 460	بهران بردبار PG460
LubC,Gear PG 680	Shell Omala S4 WE 680	بهران بردبار PG680
LubC,Gear PG 1000	Shell Omala S4 WE 1000	بهران بردبار PG1000
LubC, Turbine T22	-	-
LubC, Turbine T32	Shell Turbo Oil T32	بهران توربین 32
LubC, Turbine T46	Shell Turbo Oil T46	بهران توربین 46
LubC, Turbine T68	Shell Turbo Oil T68	بهران توربین 68
LubC, Turbine T100	Shell Turbo Oil T100	بهران توربین 100
LubC, Turbine T Plus 22	-	-
LubC, Turbine T Plus 32	-	-
LubC, Turbine T Plus 46	-	-
LubC, Turbine T Plus 68	-	-
LubC, Turbine T Plus 100	-	-
LubC, Diesel HD 10W40	Shell Rimula R6 LM 10W40	بهران اکسترا توربو دیزل 10W40
LubC, Diesel HD 15W40	Shell Rimula R6 LM 15W40	بهران اکسترا توربو دیزل 15W40

Equivalent

LubChemicals	Equivalent	معادل ایرانی
LubC, Diesel HD 20W40	Shell Rimula R1 Multi 20w40	بهران توربو دیزل 20W50
LUBC, DIESEL HD 20W50	Shell Rimula R4X 20W50	بهران توربو دیزل 20W50
LubC, Diesel SD 15W40	Shell Rimula R4X 15W40	بهران سوپر توربو دیزل 15W40
LubC, Diesel SD 20W40	-	-
LubC, Diesel SD 25W50	-	-
LubC, Spin 5	Shell Morlina S2 BL 5	-
LubC, Spin 10	Shell Morlina S2 BL 10	بهران درفش 10
LubC, Spin 15	Shell Morlina S2 BL 15	-
LubC, Spin 22	Shell Morlina S2 BL 22	-
LubC, Spin 32	Shell Morlina S2 BL 32	بهران درفش 32
LubC, Spin 46	Shell Morlina S2 BL 46	بهران درفش 46
LubC, Spin 68	Shell Morlina S2 BL 68	بهران درفش 68
LubC, Spin 100	Shell Morlina S2 BL 100	بهران درفش 100
LubC, Spin 150	Shell Morlina S2 BL 150	بهران درفش 150
LubC, Spin 220	Shell Morlina S2 BL 220	بهران درفش 220
LubC, Spin 320	Shell Morlina S2 BL 320	بهران درفش 320
LubC, Spin 460	Shell Morlina S2 BL 460	بهران درفش 460
LubC, ATF 2	Shell Spirax S2 ATF DII	بهران اتوماتیک II
LubC, ATF 3	Shell Spirax S3 ATF MD3	بهران اتوماتیک III
LubC, ATF 4	-	-
LubC, ATF 5	-	-
LubC, ATF 6	-	-
LubC,Gear TF 75W80	Shell Spirax S3 AX 75W80	بهران سمند ویژه 75W80
LubC,Gear TF 75W90	Shell Spirax S3 AX 75W90	بهران سمند ویژه 75W90
LubC,Gear TF 80W90	Shell Spirax S3 AX 80W90	بهران سمند ویژه 80W90
Lub C,Gear TF 85W90	Shell Spiral S3 AX 85W90	بهران سمند ویژه 85W90
LubC,Gear TF 85W140	Shell Spirax S3 AX 85W140	بهران سمند ویژه 85W140
LubC,Gear TF 85W250	-	-

Equivalent

LubChemicals	Equivalent	معادل ایرانی
LubC,Gear TF 90W	-	MB90
LubC,Gear TF 140W	-	-
LubC, Chain ST 250	Bechem Berusynth CU 250-Kluber	-
LubC, WRL 00	-	-
LubC,Grease L 1	Shell Gadus S2 V100- 1	بهران یاقوت 1
LubC,Grease L 2	Shell Gadus S2 V100- 2	بهران یاقوت 2
LubC,Grease L 3	Shell Gadus S2 V100- 3	بهران یاقوت 3
LubC,Grease L EP 000	Shell Gadus S2 V220- 000	-
LubC,Grease L EP 00	Shell Gadus S2 V220- 00	-
LubC,Grease L EP 0	Shell Gadus S2 V220- 0	-
LubC,Grease L EP1	Shell Gadus S2 V220- 1	بهران یاقوت EP1
LubC,Grease L EP2	Shell Gadus S2 V220- 2	بهران یاقوت EP2
LubC,Grease L EP3	Shell Gadus S2 V220- 3	بهران یاقوت EP3
LubC,Grease LC2	Shell Gadus S2 V220- AC 2 -2	-
LubC,Grease LC HD2	Shell Gadus S2 V220- AC 2 -2	-
LubC,Grease LC SD2	Shell Gadus S2 V220- AC 2 -2	-
LubC,Grease L Plex SPA HV	-	-
LubC,Grease L Plex SPA HV Plus	-	-
LubC,Grease L Plex SPA MV	-	-
LubC,Grease L Plex SPA MV Plus	-	-
LubC,Grease L Plex 1	Shell Gadus S3 V100- 1	-
LubC,Grease L Plex 2	Shell Gadus S3 V100- 2	-
LubC,Grease L Plex 3	Shell Gadus S3 V100- 3	-
LubC,Grease L Plex Plus1	-	-
LubC,Grease L Plex Plus2	-	-
LubC,Grease L Plex Plus3	-	-
LubC,Grease L Plex EP1	Shell Gadus S3 V220 C1	-
LubC,Grease L Plex EP2	Shell Gadus S3 V220 C2	Behnam Multiple Plex EP2 HV

Equivalent

LubChemicals	Equivalent	معادل ایرانی
LubC,Grease L Plex EP3	Shell Gadus S3 V220 C3	-
LubC,Grease L Plex HD 1	Shell Gadus S3 V460 - 1	-
LubC,Grease L Plex HD 2	Shell Gadus S3 V460 - 2	-
LubC,Grease L Plex HD 3	Shell Gadus S3 V460 - 3	-
LubC,Grease C EP1	-	-
LubC,Grease C EP2	-	-
LubC,Grease C EP3	-	-
LubC,Grease CSD1	-	-
LubC,Grease CSD2	-	-
LubC,Grease CSD3	-	-
LubC,Grease CPlex SD1	-	-
LubC,Grease CPlex SD2	-	-
LubC,Grease CPlex SD3	-	-
LubC,Grease LMoly HD1	Shell Gadus S2 V220- AD1	-
LubC,Grease LMoly HD2	Shell Gadus S2 V220- AD2	-
LubC,Grease LMoly HD3	Shell Gadus S2 V220- AD3	-
LubC,GreaseLPlexMolyHD2	Shell Gadus S3 V460 XD 2	-
LubC,GreaseLPlexMolyHD3	Shell Gadus S3 V460 XD 3	-
LubC,Grease LC Plex HD1	-	-
LubC,Grease LC Plex HD2	-	-
LubC,Grease LC Plex HD3	-	-
LubC,Grease CSPlex1	Total Ceran HV1	-
LubC,Grease CSPlex2	Total Ceran HV2	-
LubC,Grease CSPlexPlus1	-	-
LubC,Grease CSPlexPlus1.5	-	-
LubC,Grease CSPlexPlus2	-	-
LubC,Grease PU 1	Shell Gadus S3 T100 -1	-
LubC,Grease PU 1.5	Shell Gadus S3 T100 -1.5	-

Equivalent

LubChemicals	Equivalent	معادل ایرانی
LubC,Grease PU 2	Shell Gadus S3 T 100 -2	-
LubC,Grease PU 3	Shell Gadus S3 T 100 -3	-
LubC,Grease PU Plus 1.5	Bechem Berutox M 21 KN 1.5	-
LubC,Grease PU Plus 2	Bechem Berutox M 21 KN 2	-
LubC,Grease PU Plus 3	Bechem Berutox M 21 KN 3	-
LubC,Grease PU EP 1	-	-
LubC,Grease PU EP 1.5	-	-
LubC,Grease PU EP 2	-	-
LubC,Grease PU EP 3	-	-
LubC,GreaseALPlexOG500	Behem Brulit GA 400	-
LubC,GreaseALPlexOG1000	Behem Brulit GA 800	-
LubC,GreaseALPlexOG2500	Behem Brulit GA 2500	-

Our products are certified to meet all necessary requirements

LUBCHEMICALS understands that above issue is key to the development of the organization which this policy establishes the following main points:

1- Continuous improvement of the quality in products and services, environmental management system and safety system.

2- Fulfilment of the existing legislation.

3- Training of employees and stakeholders as an essential element for the development of the organization and achieving full integration and participation.

4- Meeting the needs of our customers, achieving our own personal satisfaction, and getting to consolidate and improve our competitiveness and our expansion in the market by:

- Prioritize error prevention rather than correction.
- Enhancing production planning to maximize the performance of the facilities.
- Providing the necessary resources for the improvement of process control.
- Minimize residues, improving the maintenance and cleanliness of the plant.

5- To develop our activity with the utmost respect for the protection for the environment:

- Identification and secure the proper management of environmental aspects.
- Minimize waste.
- Pollution prevention, and when not possible, minimize the environmental impact.
- Incorporate environmental criteria into the business management.

6- Ensuring safety protection at work:

- Identify and prevent occupational hazards.
- Having the appropriate facilities, equipment and tools.
- Encourage coordination with the staff for the risk management.
- Incorporating safety criteria into the management of the business itself.

LUBCHEMICALS wishes to promote this policy and encourages all the organization and other parties concerned to comply with it.

Services

On a basic rule our engineers support customers and distributors with all sorts of technical topics.

- LUBCHEMICALS Product advices
- Optimization of lubrication consumptions and intervals
- Rationalization of products the number of products being used
- Technical engineering services
- Used oil analysis program
- Technical consulting while site visiting



Professional Lubrication



Rembrandtstr. 80 | 70567 Stuttgart-Germany
Tel. 0049 711 235450 | 0049 711 235464 | Fax:0049 711 2360553
WWW.lubchemicals.com | lube@lubchemicals.com