

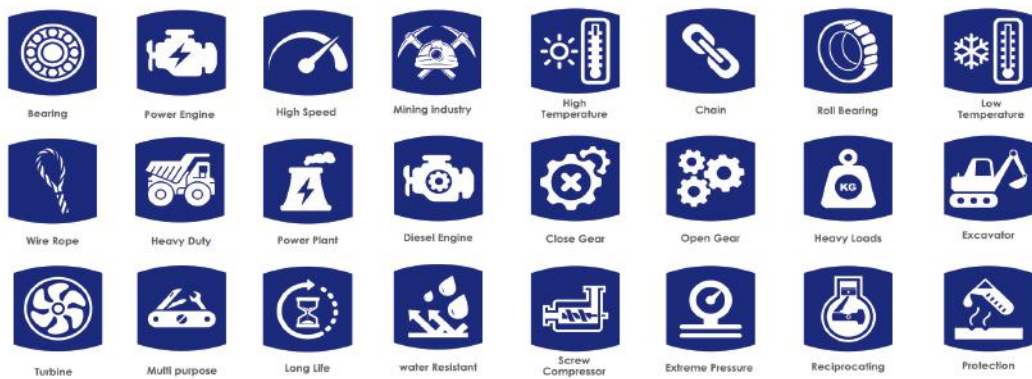


# Mine Industry Lubchemicals Lubricants

Speciality Lubricants for Future Technology  
Professional Lubrication

# Contents

LubC, Diesel HD	3	LubC, Gear PG	24	LubC, Grease CPlex SD	45
LubC, Diesel SD	4	LubC, Gear TC	25	LubC, Grease LC	46
LubC, Diesel Gas LA	5	LubC, Gear TF	26	LubC, Grease LC HD	47
LubC, Coolant EG	6	LubC, ATF	27	LubC, Grease LC SD	48
LubC, Hydraulic M	7	LubC, HTF Plus	28	LubC, Grease LC Plex HD	49
LubC, Hydraulic MZ	8	LubC, Spin	29	LubC, Grease LC Moly HD	50
LubC, Hydraulic T	9	LubC, Vaccum Pump	30	LubC, Grease LC Moly SD	51
LubC, Hydraulic TZ	10	LubC, WRL	31	LubC, Grease CSplex	52
LubC, Hydraulic T Plus	11	LubC, Grease L	32	LubC, Grease CSplex Plus	53
LubC, Hydraulic TZ Plus	12	LubC, Grease L EP	33	LubC, Grease PU	54
LubC, Comp R	13	LubC, Grease LPlex	34	LubC, Grease PU Plus	55
LubC, Comp R Plus	14	LubC, Grease LPlex Plus	35	LubC, Grease PU EP	56
LubC, Comp Super R Plus	15	LubC, Grease LPlex EP	36	LubC, Grease AI Plex OG	57
LubC, Comp R S	16	LubC, Grease LPlex HD	37	LubC, Paste Cu	58
LubC, Comp P	17	LubC, Grease L Moly HD	38	LubC, Paste SPlex 1100	59
LubC, Comp PS	18	LubC, Grease LPlex Moly HD	39	Equivalent	60
LubC, Turbine T	19	LubC, Grease LPlex SPA	40		
LubC, Turbine T Plus	20	LubC, Grease C	41		
LubC, Gear HP	21	LubC, Grease CEP	42		
LubC, Gear HP Plus	22	LubC, Grease CSD	43		
LubC, Gear PA	23	LubC, Grease CPlex EP	44		



# About Us

LUBCHEMICALS: THE NUMBER ONE LUBRICANT & CHEMICAL SPECIALIST...

Just meaningless words? Absolutely not! For over 30 years, we have been focusing exclusively on developing and manufacturing of premium chemicals and lubricants. Whatever the application for which you require a product, we will have it. Our products related to mine industry involve mineral and synthetic lubricants such as hydraulic, compressor, gear, diesel, heat transfer, vacuum pump, chain and greases with different thickeners such as Lithium, Lithium complex, Calcium, Calcium complex, Calcium complex solphanate, Aluminum complex, Poly Urea and lubricant pastes.

As an independent manufacturer we can quickly respond to market developments. We keep a close eye on technical trends. In addition, we develop custom-made solutions for many specific requirements our customers have.

International appeal with a 'German heart' Not only Made in Germany, but also compliant with internationally applicable specifications and exported worldwide. Our production are ISO certified to reassure you of our commitment to the highest quality standards.

A technical product requires knowledge - knowledge that we are eager to share with you. This is the right place for the best product advice.



PRGK Co.

Supply and distribution of  
special lubricants in Iran

**LUBCHEMICALS**

IBL  
JBL  
UL  
UL





# LubC, Diesel HD

LubC, Diesel HD is a semi-synthetic, extra high-performance and long-life heavy duty diesel engine oil (HDEO), specifically developed for use in modern, low emission diesel engines (such as Loaders, dump trucks and trucks), including those fitted with Exhaust Gas Re-circulation (EGR) systems, which their construction model is after 2004 and should tolerate hard working condition of mines. It is blended from selected base stocks and new generation of high – performance additives.

### Viscosity Index

10W40 : 149	20W40 : 141
15W40 : 130	20W50 : 155

### Base Oil Vis. @ 40 °C

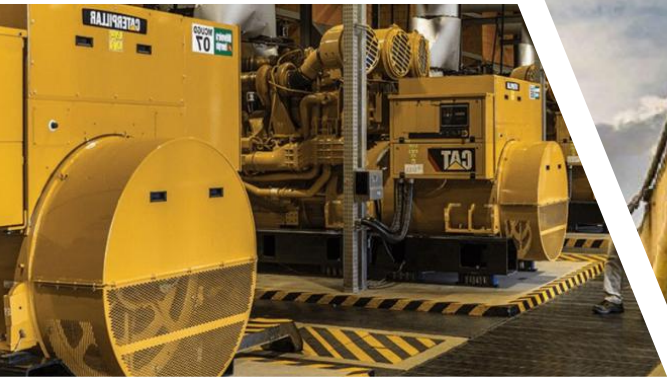
10W40 : 105	20W40 : 120
15W40 : 105	20W50 : 154

### Pour Point °C

10W40 : -33	20W40 : -33
15W40 : -30	20W50 : -33



Manufactured under Germany technology license



## LubC, Diesel SD

LubC, Diesel SD is a semi-synthetic, extra high-performance and long-life severe duty diesel engine oil (HDEO), specifically developed for use in modern, low emission diesel engines (such as Loaders, dump trucks and trucks), including those fitted with Exhaust Gas Re-circulation (EGR) systems which their construction model is after 2004 and should tolerate hard working condition of mines. It is blended from selected base stocks and new generation of high – performance additives.

- **Viscosity Index**  
15W40 : 125
- **Base Oil Vis. @ 40 °C**  
15W40 : 126
- **Pour Point °C**  
15W40 : -33



Manufactured  
under Germany  
technology license 



# LubC, Diesel Gas LA

LubC, Diesel Gas LA is an advanced performance, premium quality, bright stock free, low ash, dispersant/detergent type engine oil. It provides outstanding oxidation and nitration resistance which minimize the build up insoluble and help provides long oil and filter life. It is particularly suited for four-stroke and selected two – stroke gas engines requiring good low temperature start ability.

- **Base Oil Vis. @ 40 °C**  
142
- **Pour Point / Flash Point °C**  
- 21 / 230
- **Viscosity Index**  
106
- **Sulfated Ash , m %**  
0.59%
- **Base No, D 2896, mg KOH/g**  
7.3



Manufactured  
under Germany  
technology license



# LubC, Coolant EG

LUBC, Coolant EG is a long term antifreeze coolant concentrate based on mono ethylene glycol for heavy duty application as well as passenger cars and stationary combustion engines. This coolant is free of nitrites, amines, silicates and phosphates. It is formulated using the highly efficient OAT (Organic Acid Technology) which prevents highly loaded engines fitted to passenger cars and commercial vehicles from frost, overheating, corrosion and cavitation. It provides protection to the entire cooling system and prevents corrosion on all metals commonly found in engine cooling systems, especially aluminum.

▪ Base Oil Vis. @ 15 °C

1.125

▪ Freezing Point,%33 Aqu. °C, Max.

- 18

▪ Freezing Point,%50 Aqu. °C, Max.

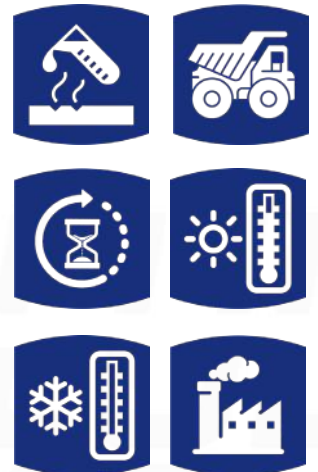
-36

▪ Boiling Point, %50 Aqu. °C, Min.

165

▪ PH, %50 Aqu

5.6



Manufactured  
under Germany  
technology license





# LubC, Hydraulic M

LubC, Hydraulic M is a premium quality multi – purpose lubricating oil, based on group II base stock, designed for use in hydraulic systems under average pressure in cranes, excavators, drilling machines, stone cutting machines, heavy duty diesel machinery (such as Loaders, dump trucks and trucks) and where R&O type of oils are required. Also blended from high – quality base stocks and stabilized zinc additive system , supporting the performance requirements of DIN 51524 part1 (HM).

▪ **Viscosity Index ( approx.)**

105

▪ **Base Oil Vis. @ 40 °C**

15 :14.4	22 :22	32 :33
46 :46.5	68 :68	100 :101

▪ **Pour Point / Flash Point °C**

15 : -30 / 210	22 : -30 / 215	32 : -30 / 225
46 : -30 / 230	68 : -24 / 237	100 : -24 / 245

▪ **ISO VG**

15 / 22 / 32 / 46 / 68 / 100



Manufactured under Germany technology license





# LubC, Hydraulic MZ

LubC, Hydraulic MZ is an ash less (Zinc-free) high – performance hydraulic fluid, based on group II base stock, designed for use in hydraulic systems containing silver or silver – plated parts in Shovel, bulldozer, grader, drill wagon operating under medium pressure and requiring medium degree of load-carrying capability and also suitable for hydraulic pumps and hydraulic systems of excavators, cranes, and hydrostatic drives, subjected to outdoor operating conditions .

### ▪ Viscosity Index ( approx.)

105

### ▪ Base Oil Vis. @ 40 °C

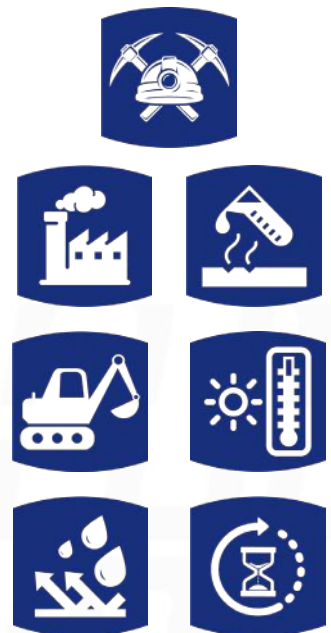
15 : 15	22 : 22.6	32 : 33.6
46 : 46.3	68 : 68.4	100 : 100.5

### ▪ Pour Point / Flash Point °C

15 : -30 / 210	22 : -30 / 215	32 : -30 / 225
46 : -30 / 230	68 : -24 / 237	100 : -27 / 245

### ▪ ISO VG

15 / 22 / 32 / 46 / 68 / 100



Manufactured under Germany technology license



# LubC, Hydraulic T

LubC, Hydraulic T is a High performance , anti - wear hydraulic fluid based on group II base stock, It is designed for use in hydraulic systems operating under high pressures and requiring high degree of load - carrying capability such as Shovel, bulldozer, grader, drill wagon, stone Stone cutting machines and heavy cargo vehicles (dump trucks, loaders, trucks, etc.). Also suitable for most hydraulic pumps and hydraulic systems of excavators, cranes, and hydrostatic drives subjected to most severe outdoor operating conditions .

▪ **Viscosity Index ( approx.)**

142

▪ **Base Oil Vis. @ 40°C**

15 : 15.5	22 : 22	32 : 33.1
46 : 45	68 : 68	100 : 100

▪ **Pour Point / Flash Point °C**

15 : -39 / 200	22 : - 39 / 210	32 : -33 / 215
46 : -33 / 220	68 : -30 / 227	100 : -30 / 235

▪ **ISO VG**

15 / 22 / 32 / 46 / 68 / 100



Manufactured  
under Germany  
technology license





# LubC, Hydraulic TZ

LubC, Hydraulic TZ is an ash less (Zinc-free) high – performance hydraulic fluid based on group II base stock, It is designed for use in hydraulic systems containing silver or silver – plated parts, operating under high pressure and requiring high degree of load-carrying capability in cranes, draglines, drilling machines, stone cutting machines, heavy trucks subjected to most severe outdoor operating conditions.

▪ **Viscosity Index ( approx.)**

143

▪ **Base Oil Vis. @ 40 °C**

15 : 15.4	22 : 22.3	32 : 33
46 : 44.9	68 : 68	100 : 99.6

▪ **Pour Point / Flash Point °C**

15 : -39 / 200	22 : -39 / 210	32 : -33 / 215
46 : -33 / 220	68 : -30 / 227	100 : -30 / 235

▪ **ISO VG**

15 / 22 / 32 / 46 / 68 / 100



Manufactured under Germany technology license



# LubC, Hydraulic T Plus

LubC, Hydraulic TPlus is a High performance, anti - wear hydraulic fluid based on group II&III base stocks, It is designed for use in hydraulic systems operating under high pressures and requiring high degree in cranes, draglines, drilling machines, stone cutting machines, and heavy cargo vehicles (dump trucks, loaders, trucks, etc.) subjected to most severe outdoor operating conditions.

### ▪ Viscosity Index ( approx.)

160

### ▪ Base Oil Vis. @ 40 °C

15 : 15.8	22 : 22	32 : 33.6
46 : 44	68 : 68	100 : 100

### ▪ Pour Point / Flash Point °C

15 : -42 / 164	22 : -42 / 175	32 : -42 / 170
46 : -42 / 240	68 : -36 / 235	100 : -30 / 246

### ▪ ISO VG

15 / 22 / 32 / 46 / 68 / 100



Manufactured under Germany technology license 



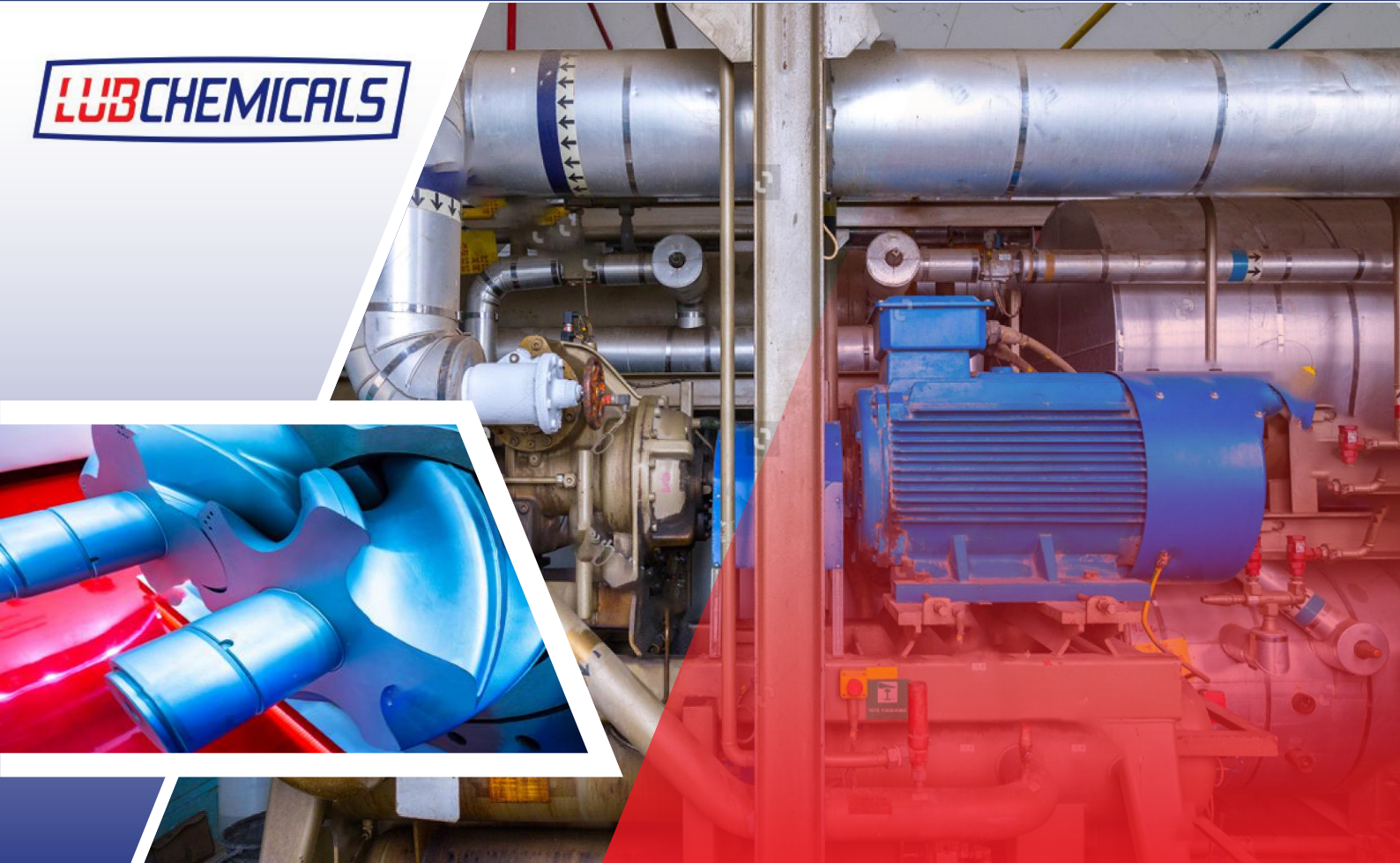
# LubC, Hydraulic TZ Plus

LubC, Hydraulic TZPlus is an ash less (Zinc-free) high – performance hydraulic fluid based on group II&III base stocks, It is designed for use in hydraulic systems containing silver or silver – plated parts, operating under high pressure and requiring high degree in cranes, draglines, digging machines (shovel, bulldozer, grader, drill wagon, etc.), stone cutting machines, and heavy cargo vehicles, subjected to most severe outdoor operating conditions.

<b>▪ Viscosity Index ( approx.)</b>		
160		
<b>▪ Base Oil Vis. @ 40 °C</b>		
15 :15.1	22 :22.4	32 :33.6
46 :46.3	68 : 68.6	100 : 100
<b>▪ Pour Point / Flash Point °C</b>		
15 : -42 / 164	22 : -42 / 206	32 : -42 / 208
46 : -42 / 220	68 : -42 / 224	100 : -39 / 237
<b>▪ ISO VG</b>		
15 / 22 / 32 / 46 / 68 / 100		



Manufactured under Germany technology license 



# LubC, Comp R

LubC, Comp R is based on high grade specially selected solvent refined base oils, This compressor oil is a dispersant type oil intended primarily for oil-flooded rotary sliding-vane and screw-type compressors with relative high operating temperatures. It is very effective in preventing from foam and suitable for rotary vane screw compressors (Max-change over time up to 4000 hr.)

### Viscosity Index

32 : 105      46 : 105      68 : 104

### Base Oil Vis. @ 40 °C

32 : 32      46 : 43.44      68 : 68.6

### Pour Point / Flash Point °C

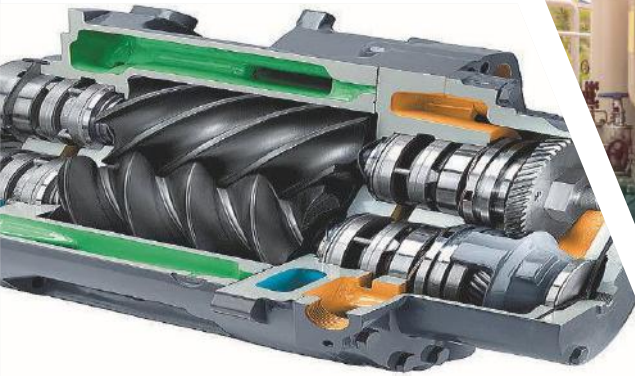
32 : -30 , 210  
46 : -30 , 216  
68 : - 30 , 220

### ISO VG

32 / 46 / 68



Manufactured under Germany technology license 



# LubC, Comp R Plus

LubC, Comp R Plus is formulated using hydro cracked / iso dewaxed hydrocarbon base fluids. Designed specifically for use in oil flood lubricated positive displacement rotary compressor. It will extend drain intervals up to 2 times longer than conventional mineral oils. (Max-change over time up to 6000 hr.)

<b>Viscosity Index</b>		
32 : 127	46 : 124	68 : 124
<b>Base Oil Vis. @ 40 °C</b>		
32 : 32.2	46 : 46.6	68 : 68.5
<b>Pour Point / Flash Point °C</b>		
32 : -36	, 236	
46 : -33	, 240	
68 : -33	, 244	
<b>ISO VG</b>		
32 / 46 / 68		



Manufactured under Germany technology license



# LubC, Comp Super R Plus

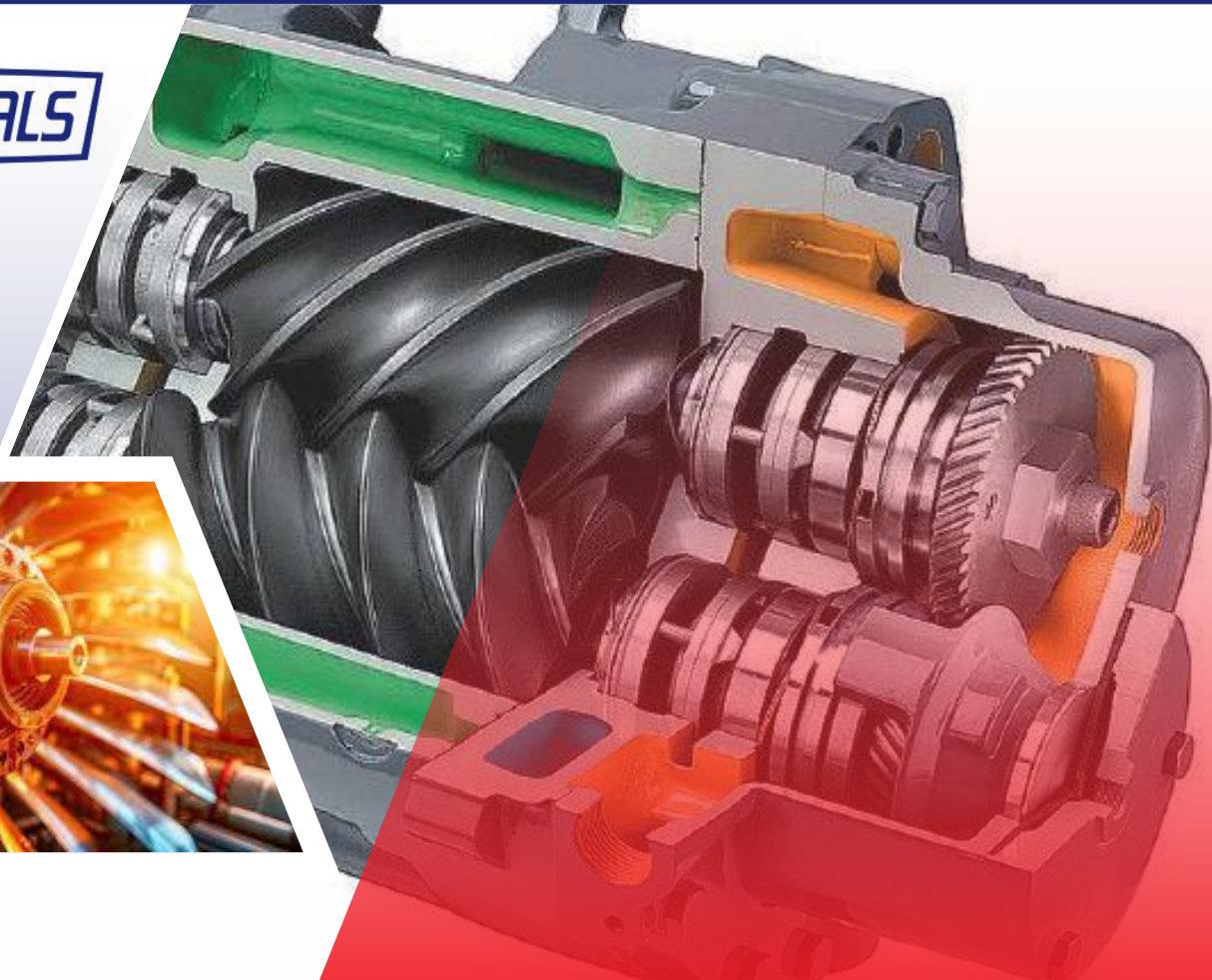
LubC, Comp R Plus is a heavy duty, based on synthetic PAO & group III base stock compressor oil, containing special oxidation and rust inhibitors. It is designed specifically for use in oil flood lubricated positive displacement rotary compressor. It will extend drain intervals up to 2.5 times longer than conventional mineral oils. (Max-change over time up to 8000 hr.)

■ Viscosity Index		
32 : 126	46 : 130	68 : 134
■ Base Oil Vis. @ 40 °C		
32 : 32.2	46 : 46.6	68 : 68.5
■ Pour Point / Flash Point °C		
32 : -39	, 236	
46 : -39	, 240	
68 : -39	, 244	
■ ISO VG		
32 / 46 / 68		



Manufactured under Germany technology license 





## LubC, Comp R S

LubC, Comp RS is formulated from synthetic base fluid utilizing synthetic hydrocarbon (PAO) with specially developed additive systems. Designed specifically for use in oil flood lubricated positive displacement rotary compressor. It will extend drain intervals up to 3 times longer than conventional mineral oils. (Max-change over time up to 12000 hr.)

### Viscosity Index

32 : 140	46 : 140	68 : 135
----------	----------	----------

### Base Oil Vis. @ 40 °C

32 : 32.2	46 : 46.4	68 : 68.2
-----------	-----------	-----------

### Pour Point / Flash Point °C

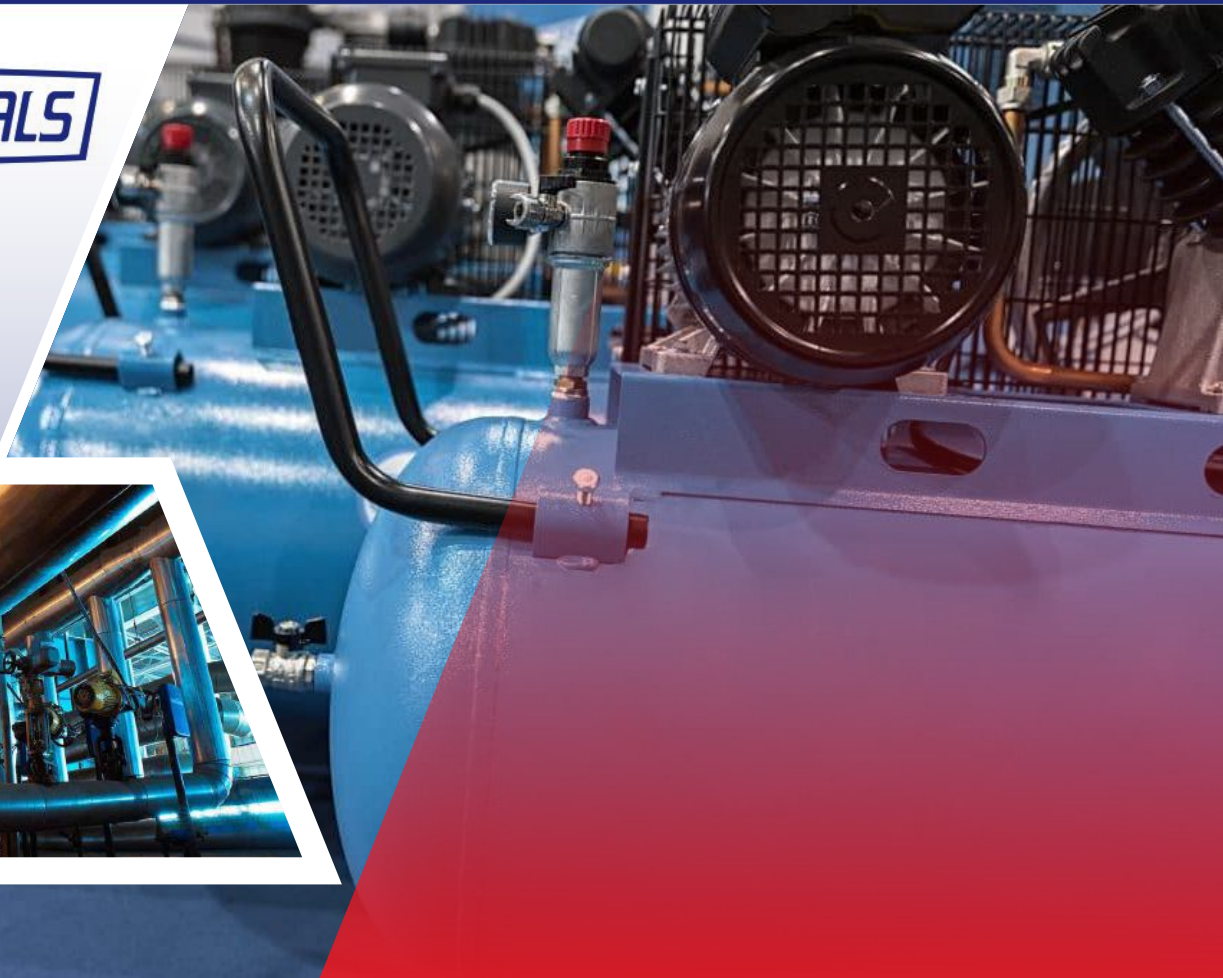
32 : -45	,	236
46 : -42	,	246
68 : -42	,	249

### ISO VG

32 / 46 / 68
--------------



Manufactured  
under Germany  
technology license



## LubC, Comp P

LubC, Comp P is a premium performance ash less air compressor lubricants intended for the lubrication of severe duty reciprocating air compressors. It is formulated with high quality mineral base oils and a high performance additive system designed to provide exceptional equipment protection and reliability for compressors operating under mild to heavy duty conditions.

### Viscosity Index

68 : 55      100 : 51      150 : 53

### Base Oil Vis. @ 40 °C

68 : 69      100 : 101      150 : 153

### Pour Point / Flash Point °C

68 : -36 , 235  
100 : -33 , 240  
150 : -36 , 245

### ISO VG

68 / 100 / 150



Manufactured  
under Germany  
technology license





## LubC, Comp PS

LubC, Comp PS is a supreme performance air compressor lubricant primarily intended for the lubrication of severe duty reciprocating air compressors. It is formulated with specific designed synthetic base oil and a high technology additive system that assures exceptional equipment protection and reliability for compressors operating under conditions where mineral oil based products are not meeting expectations.

### Viscosity Index

68 : 95      100 : 82      150 : 88

### Base Oil Vis. @ 40 °C

68 : 68      100 : 100      150 : 150

### Pour Point / Flash Point °C

68 : -51      ,      257  
100 : -39      ,      266  
150 : -30      ,      242

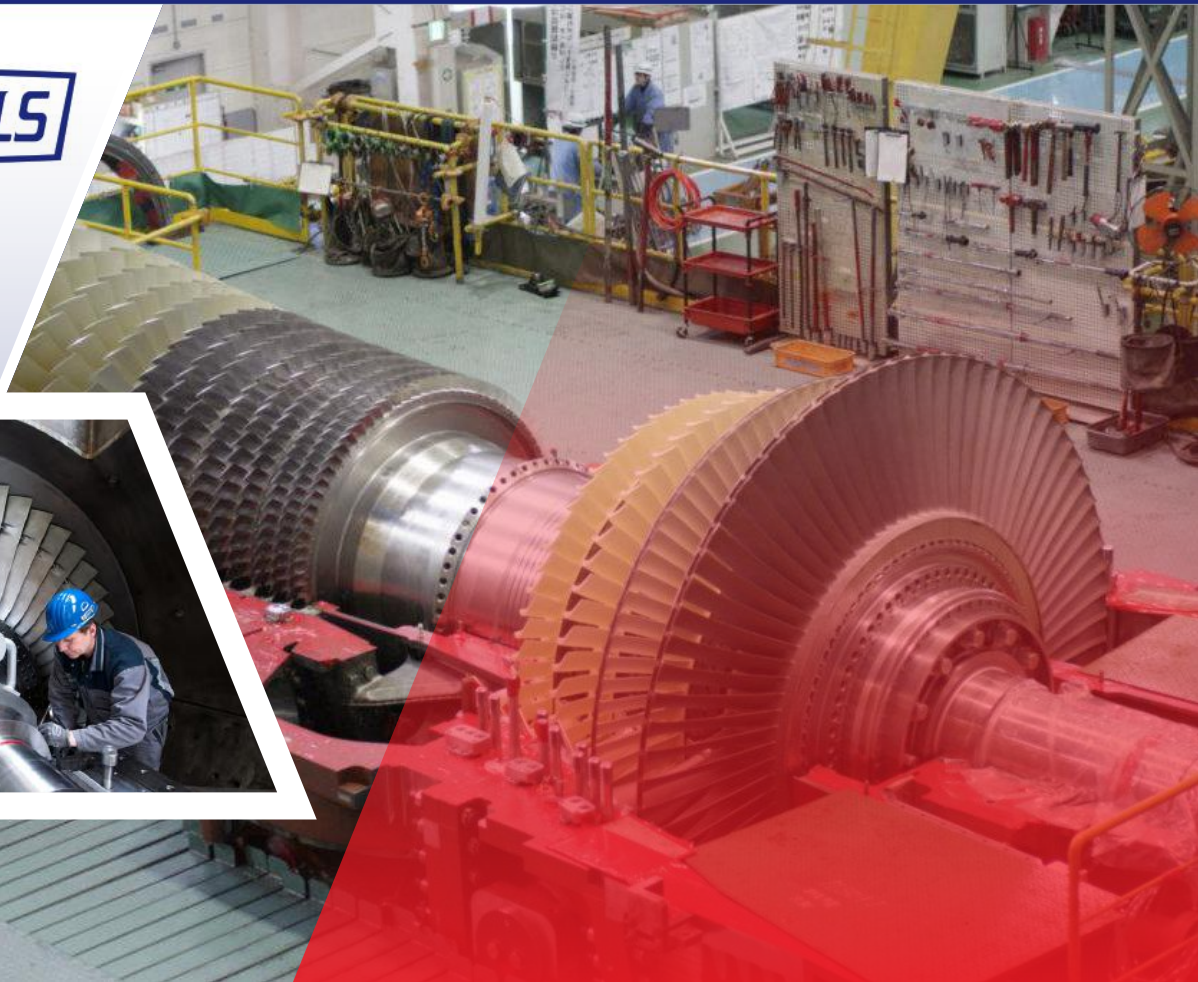
### ISO VG

68 / 100 / 150



Manufactured  
under Germany  
technology license





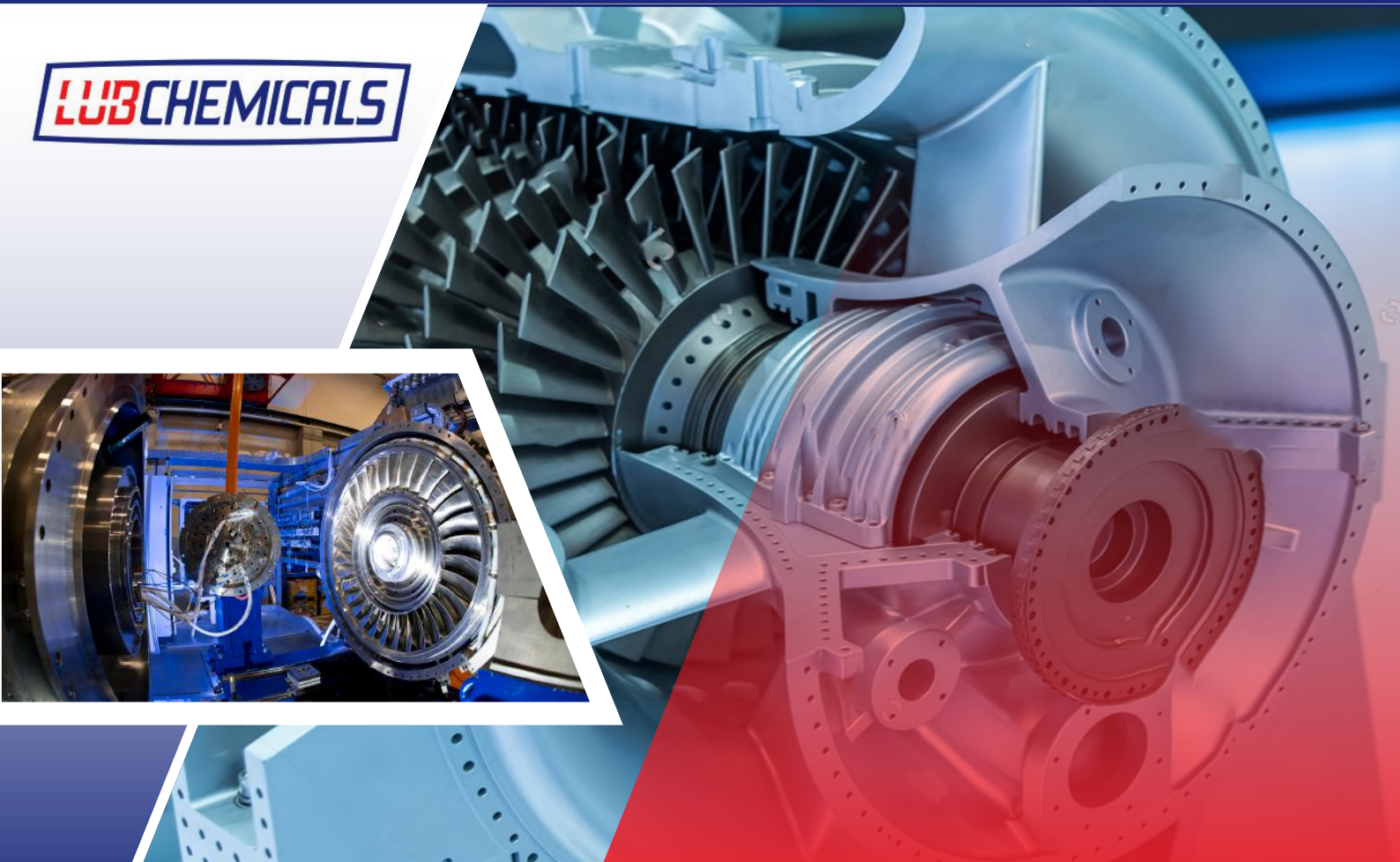
# LubC, Turbine T

LubC, Turbine T is a high quality inhibited turbine oil which Contains highly effective rust, oxidation and foam inhibitors . It is formulated to have good air release properties and good oxidation stability. It is suitable for hydroelectric, steam and hydraulic turbines operating under all service conditions as well as centrifugal, rotary and reciprocating compressors, turbo-blowers and centrifugal pumps.

<b>▪ Base Oil Vis. @ 40 °C</b>			
32 :32	46 :46	68 :67	100 :100
<b>▪ Pour Point / Flash Point °C</b>			
32 : -36 / 237	46 : -33 / 250	68 : -33 / 250	100 : -33 / 255
<b>▪ Viscosity Index</b>			
32 : 127	46 : 124	68 : 124	100 : 115
<b>▪ RPVOT Test Result</b>			
> 900			
<b>▪ ISO VG</b>			
32 / 46 / 68 / 100			



Manufactured under Germany technology license



## LubC, Turbine T Plus

LubC, Turbine T Plus is a premium quality inhibited turbine oil which contains highly effective rust, oxidation and foam inhibitors. It is formulated to have good air release properties and good oxidation stability. It is suitable for Hydroelectric, Steam and hydraulic turbines operating under all service conditions as well as centrifugal, rotary and reciprocating compressors, turbo-blowers and centrifugal pumps.

### ▪ Base Oil Vis. @ 40 °C

32 :32      46 :46      68 :67      100 :100

### ▪ Pour Point / Flash Point °C

32 : -36 / 237      46 : -33 / 240  
68 : -33 / 250      100 : -33 / 255

### ▪ Viscosity Index

32 : 127      46 : 124      68 : 124      100 : 115

### ▪ RPVOT Test Result

> 900

### ▪ ISO VG

32 / 46 / 68 / 100



Manufactured  
under Germany  
technology license 



## LubC, Gear HP

LubC, Gear HP is an advanced industrial gear oil, designed primarily for the lubrication of heavy duty industrial gears. Its high load carrying capacity and anti-friction characteristic combine to offer superior performance in gears as well as suitable for lubrication of bearing and other components in circulating and splash lubricated systems. Cranes, drag lines, drilling machines (shovel, bulldozer, grader, drill wagon, etc.), and heavy cargo vehicles (loader, truck, etc.) are among the applications of this type of oil.

- **Viscosity Index (approx.)**

95 FZG Test : 12

- **Timken O.K Load (lbs)**

27

- **ISO VG**

68 / 100 / 150 / 220 / 320 / 460 / 680 / 1000



Manufactured  
under Germany  
technology license 



## LubC, Gear HP Plus

LubC, Gear HP Plus is an advanced industrial gear oil, designed primarily for the lubrication of heavy duty industrial gears. It is high load carrying capacity and anti-friction characteristic combine to offer superior performance particularly suitable for gear sets working under heavy to shock loads and in non-gear applications include highly loaded and slow speed plain and rolling contact bearings. Use in cranes, drag lines, drilling machines (shovel, bulldozer, grader, drill wagon, etc.) and heavy cargo vehicles (loader, truck, etc.) are other uses of this type of oil.

- **Viscosity Index ( approx.)**

106

- **FZG Test**

> 12

- **Timken O.K Load (lbs)**

27

- **ISO VG**

220 / 320 / 460



Manufactured  
under Germany  
technology license 



## LubC, Gear PA

LubC, Gear PA is a Poly Alpha Olefin based advanced synthetic heavy duty industrial gear oil as well as particularly suited for gear applications exposed to extreme service conditions , all type of enclosed gear, drives, bearings, including plain rolling elements and anti friction types, applications requiring High micro-pitting resistance. Drilling machines (shovel, bulldozer, grader, drill wagon, etc.), stone crusher, mill, screen machinery, etc. are other uses of this type of oil.

- FZG Test

> 12

- Timken O.K Load (lbs )

> 67

- ISO VG

32 / 46 / 68 / 100 / 150 / 220 / 320 / 460 / 680 / 1000



Manufactured  
under Germany  
technology license 





## LubC, Gear PG

LubC, Gear PG is a Poly Alkaline Glycol based on advanced synthetic heavy-duty industrial gear oil as well as particularly suited for gear applications exposed to extreme service conditions, all type of enclosed gear, drives, bearings, including plain rolling elements and anti friction types, applications requiring High micro-pitting resistance.

- **FZG Test**

> 12

- **Timken O.K Load (lbs)**

> 70

- **ISO VG**

100 / 150 / 220 / 320 / 460 / 680



Manufactured  
under Germany  
technology license 



# LubC, Gear TC

LubC, Gear TC is a high performance lubricating oil , produced from high quality mineral base stocks and appropriate additives. This product is suitable for use in mining equipment, shafts, deep well pump shells and other simple applications.

### ▪ Viscosity Index

10W : 110      30 : 108      10W30: 130

### ▪ Base Oil Vis. @ 40 °C

10W : 40.5      30 : 90      10W30: 73.5

### ▪ Pour Point °C

10W : -42      30 : -39      10W30: -33

### ▪ Flash Point

10W : 233      30 : 265      10W30: 240



Manufactured under Germany technology license



# LubC, Gear TF

LubC, GearTF is a high-performance gear lubricant, designed to provide excellent lubrication under severe conditions like high speed / shock load , high speed/low torque and low speed / high torque in the wide range of manual auto motives transmissions, axels and final drives. It is recommended for on light and heavy duty trucks, and off highway equipment in construction and mining.

### ▪ Viscosity Index

75W80 : 165	75W90 : 178	80W90 : 108
85W90 : 103	85W140 : 98	

### ▪ Base Oil Vis. @ 40 °C

75W80 : 53.6	75W90 : 85.6	80W90 : 138
85W140 : 172	85W140 : 435	

### ▪ Pour Point °C

75W80 : -48	75W90 : -45	80W90 : -39
85W140 : -36	85W140 : -15	



Manufactured  
under Germany  
technology license





# LubC, ATF

LubC, ATF is a synthetic high performance automatic transmission fluid. Formulated by advanced additives for supporting requirements of general Motors (DEXRON-III H/M) and Ford, along with Allison C4 applications and Caterpillar TO-2. This product is suitable for use in both passenger cars and light trucks as well as guarantees perfect operation of hydraulic transmissions under extreme operating conditions and large temperature fluctuations.

<b>Viscosity Index</b>	
II : 168	III : 186
<b>Base Oil Vis. @ 40 °C</b>	
II : 35.5	III : 33.5
<b>Pour Point °C</b>	
II : -42	III : -48
<b>SAE Grade</b>	
75 W	



Manufactured under Germany technology license



# LubC, HTF Plus

LubC, HTF Plus is a semi-synthetic premium quality heat transfer fluid used in indirectly heated closed transfer systems where maximum bulk oil temperature is 350°C. This product formulated from carefully selected highly refined mineral oils fortified with high temperature oxidation inhibitors. Lub C HTF Plus benefits from excellent thermal cracking stability and high specific thermal conductivity.

▪ **Viscosity Index**

32 : 137      46 : 128      68 : 121

▪ **Base Oil Vis. @ 40 °C**

32 : 32.8      46 : 46.6      68 : 67.5

▪ **Pour Point / Flash Point °C**

32 : -33 / 242      46 : -30 / 250      68 : -30 / 255

▪ **Operating Temp. of Bulk °C Oil & Max. Oil Film Temp. °C**

340 / 350

▪ **Total Acid Number**

0.01 Max

▪ **ISO VG :**

32 / 46 / 68



Manufactured  
under Germany  
technology license





# LubC, Spin

LubC, Spin is formulated from highly refined mineral oil, anti-wear agents and rust and oxidation inhibitors. It is designed to provide outstanding oxidation and water separation protection for most general industrial bearing and circulating oil system applications as well as other certain industrial applications which don't require oil with extreme pressure properties.

### ▪ Base Oil Vis.@ 40 °C

5: 5	10: 9.85	22: 22	32: 31.5
46: 45	68: 68	100: 101	150: 148
220: 218	320: 320	460: 470	680: 675

### ▪ Viscosity Index (Approx)

95

### ▪ Rust Test , Distilled Water

Pass

### ▪ Acid Number

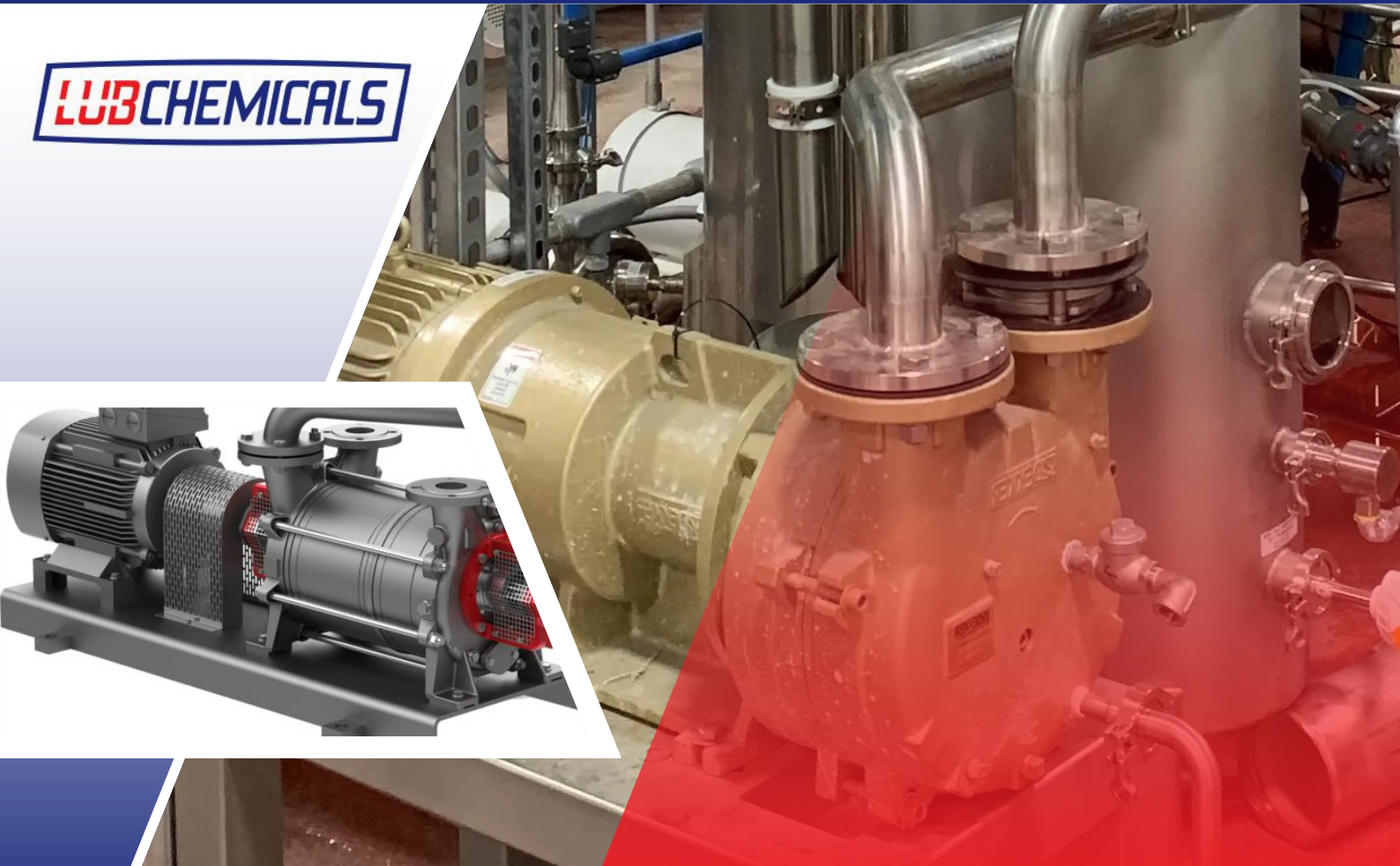
0.0

### ▪ ISO VG

5/10/22/32/46/68/100/150/220/320/460/680



Manufactured under Germany technology license 



## LubC, Vacuum Pump

LubC, Vacuum Pump is a premium performance, mineral based vacuum pump oil containing a special oxidation inhibitor and a rust inhibitor. It is designed specifically for use in deep vacuum pumps. Through its use of vacuum-compatible additives, protects your pump and extends its life expectancy.

### ▪ Base Oil Vis. @ 40 °C

32 :32	46 :46	68 :67	100 :100
--------	--------	--------	----------

### ▪ Pour Point / Flash Point °C

32 : -36 / 225	46 : -36 / 245
68 : -30 / 265	100 : -30 / 265

### ▪ Viscosity Index

32 : 115	46 : 115	68 : 115	100 : 115
----------	----------	----------	-----------

### ▪ ISO VG

32 / 46 / 68 / 100
--------------------



Manufactured  
under Germany  
technology license

## LubC, WRL

LubC, WRL is a semi-fluid high performance, oil-based rust preventive intended to serve as a wire rope lubricant and to prevent rust and corrosion under operating and storage conditions. It contains solid lubricants and chemically active EP additives and excellent film forming properties and works well between the strands of wire rope, providing excellent lubrication during flexing. This characteristic reduces wear and improves life. Using in cranes, drag lines, drilling rigs, etc. are important applications of this type of specialized grease.

- **Thickener**

AL Complex

- **Base Oil**

Mineral

- **Service Temp. °C**

-20°C to +200°C ( Max +250°C )

- **NLGI Grade**

0 /0-00/00



Manufactured  
under Germany  
technology license 





## LubC, Grease L

LubC, Grease L is based on premium base oil, using lithium soaps as thickener. The grease contains antioxidants, corrosion inhibitors and AW additives. It is suitable for universal use in industry and the field of motor vehicles, specially designed for use in roller bearings of electric motors and alternators as well as it can be used in temperatures less than  $-30^{\circ}\text{C}$ .

- **Thickener**

Lithium

- **Base Oil**

Mineral

- **Service Temp.  $^{\circ}\text{C}$**

$-30^{\circ}\text{C}$  to  $+120^{\circ}\text{C}$  ( Max  $+130^{\circ}\text{C}$  )

- **NLGI Grade**

1/2/3

- **4 Ball Weld Load**

2000 N



Manufactured  
under Germany  
technology license



## LubC, Grease LEP

LubC, Grease LEP is based on premium base oil, using lithium soaps as thickener. The grease contains antioxidants, corrosion inhibitors and EP/AW additives. It can also be used in mining machines (shovel, bulldozer, grader, drill wagon, etc.) and heavy cargo vehicles (dump truck, loader, truck, etc.).

- **Thickener**

Lithium

- **Base Oil**

Mineral

- **Service Temp. °C**

-20°C to +120°C ( Max +130°C )

- **NLGI Grade**

000 / 00 / 0 / 1 / 2 / 3

- **4 Ball Weld Load**

2600 N



Manufactured  
under Germany  
technology license





## LubC, Grease LPlex

LubC, Grease LPlex is based on high viscosity index mineral oil which lithium complex soap has thickened grease, containing performance additives. It is suitable for use in electric motor bearings such as those used in air blowers and as a multipurpose grease for lightly loaded ball bearing applications either operating at high temperature or when extended regreasing interval are required. This type of grease can also be used in drilling machines (shovel, bulldozer, grader, drill wagon, etc.), stone cutting machines, heavy cargo vehicles (dump trucks, loaders, trucks, etc.) and generators.

- **Thickener**

Lithium Complex

- **Base Oil**

Mineral

- **Service Temp. °C**

-30°C to +160°C ( Max +200°C )

- **NLGI Grade**

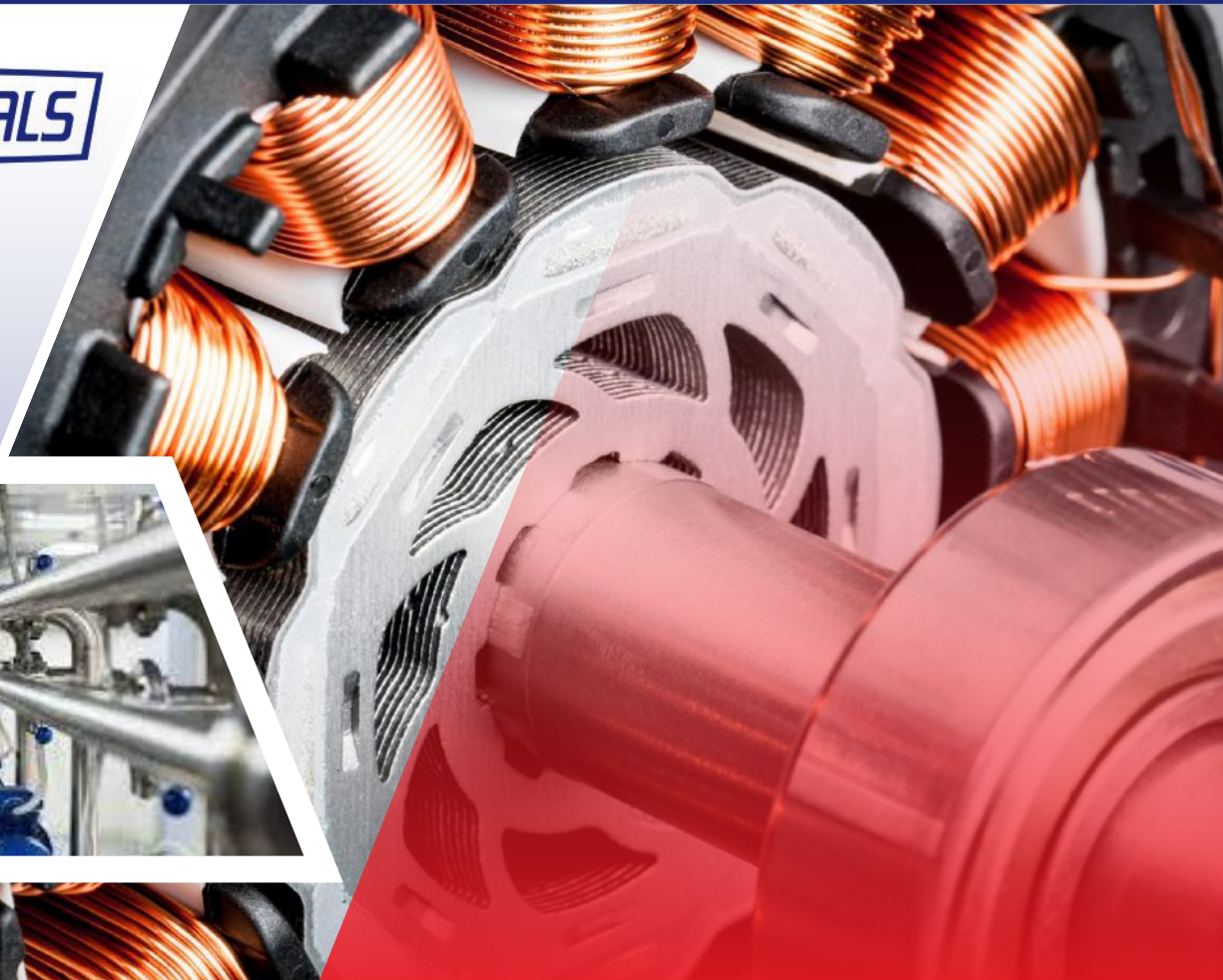
1/2/3

- **Dropping Point**

260<



Manufactured  
under Germany  
technology license 



## LubC, Grease Lplex Plus

LubC, Grease Lplex plus is based on high viscosity index mineral oil which lithium complex soap has thickened grease, containing performance additives. It is suitable for use in electric motor bearings such as those used in air blowers and as a multipurpose grease for lightly loaded ball bearing applications either operating at high temperature or when extended regreasing interval are required. This type of grease can also be used in drilling machines (shovel, bulldozer, grader, drill wagon, etc.), stone cutting machines, heavy cargo vehicles (dump trucks, loaders, trucks, etc.) and generators.

- **Thickener**

Lithium Complex

- **Base Oil**

Mineral

- **Service Temp. °C**

-30°C to +180°C ( Max +220°C )

- **NLGI Grade**

1/2/3

- **4 Ball Weld Load**

2800 N



Manufactured  
under Germany  
technology license 



# LubC, Grease LPlex EP

LubC, Grease LPlexEP is mineral oil based lithium complex soap thickened grease, containing performance additives. It is suitable for use in wheel and other bearings and as a multipurpose grease for trucks, buses and construction plant such as bulldozers, scrapers, loading shovels and dump trucks in mines where it will give outstanding performance. It is also recommended for use in industrial equipment where high temperatures are a problem.

- Thickener**  
 Lithium Complex
- Base Oil**  
 Mineral
- Service Temp. °C**  
 -30°C to +160°C ( Max +200°C )
- NLGI Grade**  
 1/2/3
- 4 Ball Weld Load**  
 2800 N



Manufactured under Germany technology license



## LubC, Grease LPlex HD

LubC, Grease LPlex HD is a mineral oil based lithium complex soap thickened grease, containing performance additives. It is suitable for use in wheel and other bearings as well as a multipurpose grease for trucks, buses and construction plant such as bulldozers, scrapers, loading shovels and dump trucks in mines where it will give outstanding performance. It is also recommended for use in industrial equipment where high temperature is a problem.

- **Thickener**

Lithium Complex

- **Base Oil**

Mineral

- **Service Temp. °C**

-20°C to +140°C ( Max +220°C )

- **NLGI Grade**

1/2/3

- **4 Ball Weld Load**

3000 N



Manufactured  
under Germany  
technology license





## LubC, Grease L Moly HD

LubC, Grease Moly HD is a premium quality multi-purpose lithium grease based on mineral oil suitable for use in all anti-friction and plain bearings subjected to high load and shock loading conditions. The incorporation of %3 Molybdenum Disulfide imparts a high degree of wear protection as well as suitable for use in industrial equipment, trucks and construction plant and particularly recommended for constant velocity joints and fifth wheel lubrication which designed to be used in automatic systems.

- **Thickener**

Lithium + MOS<sub>2</sub>

- **Base Oil**

Mineral

- **Service Temp. °C**

-20°C to +120°C ( Max +130°C )

- **NLGI Grade**

2/3

- **4 Ball Weld Load**

2600 N



Manufactured  
under Germany  
technology license 



## LubC, Grease LPlex Moly HD

LubC, Grease Moly Plex HD is a premium quality multi-purpose lithium complex grease based on mineral oil suitable for use in all anti-friction and plain bearings subjected to high load and shock loading conditions. The incorporation of %5 Molybdenum Disulfide imparts a high degree of wear protection as well as suitable for use in industrial equipment, trucks and construction plant and particularly recommended for constant velocity joints and fifth wheel lubrication which designed to be used in automatic systems.

▪ **Thickener**

LMOS2+Lithium Complex

▪ **Service Temp. °C**

-20°C to +140°C ( Max +200°C )

▪ **NLGI Grade**

2/3

▪ **4 Ball Weld Load**

3600 N



Manufactured  
under Germany  
technology license 





## LubC, Grease Lplex SPA

LubC, Grease Lplex SPA contains synthetic lithium complex grease with special friction modifier. It is designed for the lubrication various applications in all types of operating conditions, but particularly where the operation temperature is high and the use of conventional lithium greases is limited. Extensive range of applications, allowing stock rationalization and simplification of maintenance forms a lubricating film which is durable and resistant to humidity, temperature variations and pollution, hence reduces maintenance and costs. It is also recommended for use in industrial equipment where low/high speeds and moisture are considered as a problem.

- **Thickener**  
Lithium Complex
- **Base Oil**  
Mineral
- **Service Temp. °C**  
-20°C to +220°C ( Max +240°C )
- **NLGI Grade**  
2/3
- **4 Ball Weld Load**  
5500 N



Manufactured  
under Germany  
technology license





## LubC, Grease C

LubC, Grease C is a premium quality, water resistant calcium grease for use in industrial and marine applications where the presence of water and humid atmospheres can effect lubricating performance and be detrimental to the protection of parts from corrosion. It is recommended for use in water pumps, rolling mills, mines, quarries and marine equipment where salt or fresh water spray or ingress is unavoidable. The use of this lubricant is recommended in water pumps, rolling machines, mining machines (shovel, bulldozer, grader, drill wagon, etc.) and heavy cargo vehicles (dump trucks, loaders, trucks, etc.).

- **Thickener**

Calcium

- **Base Oil**

Mineral

- **Service Temp. °C**

-20°C to +70°C ( Max +80°C )

- **NLGI Grade**

1/2/3

- **4 Ball Weld Load**

2800 N



Manufactured  
under Germany  
technology license 



## LubC, Grease C EP

LubC, Grease C EP is a premium quality, water resistant anhydrous calcium grease for use in industrial and marine applications where the presence of water and humid atmospheres can effect lubricating performance and be detrimental to the protection of parts from corrosion. It is recommended to use this lubricant in water pumps, rolling machines, mines and in situations where salt water or fresh water leakage and splashing is unavoidable.

- **Thickener**  
Anhydrous Calcium
- **Base Oil**  
Mineral oil / Polymer
- **Service Temp. °C**  
-30°C to +120°C ( Max +130°C )
- **NLGI Grade**  
1/2/3
- **4 Ball Weld Load**  
2800 N



Manufactured  
under Germany  
technology license 



## LubC, Grease C SD

LubC, Grease C SD is a premium quality, water resistant anhydrous calcium grease for use in industrial and marine applications where the presence of water and humid atmospheres can effect lubricating performance and be detrimental to the protection of parts from corrosion. It is recommended for use in water pumps, rolling mills, mines, quarries and marine equipment where salt or fresh water spray or ingress is unavoidable .

- **Thickener**

Anhydrous Calcium

- **Base Oil**

Mineral oil / Polymer

- **Service Temp. °C**

-30°C to +120°C ( Max +130°C )

- **NLGI Grade**

1 / 2/3

- **4 Ball Weld Load**

3200 N



Manufactured  
under Germany  
technology license 



## LubC, Grease CPlex EP

LubC, Grease CPlex EP is a premium quality, water resistant calcium Complex grease for use in industrial and marine applications where the presence of water and humid atmospheres can effect lubricating performance and be detrimental to the protection of parts from corrosion. The use of this lubricant in water pumps, rolling machines, mining machines (shovel, bulldozer, grader, drill wagon, etc.) and heavy cargo vehicles (dump trucks, loaders, trucks, etc.) and in conditions it is recommended that the leakage and splashing of salt water or fresh water is unavoidable.

- **Thickener**  
Calcium Complex
- **Base Oil**  
Mineral
- **Service Temp. °C**  
-25°C to +140°C
- **NLGI Grade**  
1/2
- **4 Ball Weld Load**  
3000 N



Manufactured  
under Germany  
technology license 



## LubC, Grease CPlex SD

LubC, Grease CPlex SD is a premium quality, water resistant calcium complex grease for use in industrial and marine applications where the presence of water and humid atmospheres can effect lubricating performance and be detrimental to the protection of parts from corrosion. The use of this lubricant in water pumps, rolling machines, mining machines (shovel, bulldozer, grader, drill wagon, etc.) and heavy cargo vehicles (dump trucks, loaders, trucks, etc.) and in situations where leakage And spraying salt water or fresh water is unavoidable, it is recommended.

- Thickener**  
 Calcium Complex
- Base Oil**  
 Mineral
- Service Temp. °C**  
 -25°C to +160°C ( Max +200°C )
- NLGI Grade**  
 1/2
- 4 Ball Weld Load**  
 3200 N



Manufactured  
 under Germany  
 technology license 



## LubC, Grease LC

LubC, Grease LC is extremely sophisticated lithium/calcium base grease which incorporates modern polymer technology. It has a high level of mechanical stability, adherence and exceptional load carrying ability, also copes with constant high levels of loads and shock loading. It is recommended to use in Stone crushers, sanders, mills, etc. in mines.

- **Thickener**

Lithium Calcium

- **Base Oil**

Mineral

- **Service Temp. °C**

-20°C to +130°C ( Max +140°C )

- **NLGI Grade**

1/2/3

- **Ball Weld Load**

2300 N



Manufactured  
under Germany  
technology license 



## LubC, Grease LC HD

LubC, Grease LC PlexHD is a lithium/calcium complex thickened lubricating grease based on a high viscous mineral oil. The grease contains antioxidants, corrosion inhibitors & EP/AW additives based on bismuth technology. The thickener, together with the high viscous base oil, makes the product suitable for the lubrication of slow moving and heavily loaded bearings, conveyor equipment, cold rolling lines and rotating machinery such as screen machinery and stone crushers. The product has good adhesion and mechanical stability even in presence of water and corrosive fluids.

- **Thickener**  
Lithium Calcium
- **Base Oil**  
Mineral
- **Service Temp. °C**  
-20°C to +130°C ( Max +140°C )
- **NLGI Grade**  
1/2/3
- **4 Ball Weld Load**  
2500 N



Manufactured  
under Germany  
technology license 





# LubC, Grease LC SD

LubC, Grease LC SD is a lithium/calcium complex thickened lubricating grease based on a high viscous mineral oil. The grease contains antioxidants, corrosion inhibitors & EP/AW additives based on bismuth technology. The thickener, together with the high viscous base oil, makes the product suitable for the applications of bearings and bearings under medium to heavy load, conveyor equipment, cold rolling lines and rotating machinery such as screen machinery and stone crushers that operate in harsh conditions.

- Thickener  
 Lithium Calcium
- Base Oil  
 Mineral
- Service Temp. °C  
 -20°C to +130°C ( Max +140°C )
- NLGI Grade  
 1/1-2/2/3
- Ball Weld Load  
 3000 N



Manufactured under Germany technology license 



## LubC, Grease LC Plex HD

LubC, Grease LC PlexHD is a lithium/calcium complex thickened lubricating grease based on a high viscous mineral oil. The grease contains antioxidants, corrosion inhibitors & EP/AW additives based on bismuth technology. The thickener, together with the high viscous base oil, makes the product suitable for the lubrication of slow moving and heavily loaded bearings. The product has good adhesion and mechanical stability even in presence of water and corrosive fluids. It is recommended to use in stone crushers, screen machinery, mills, etc. in mines.

- **Thickener**

Lithium / Calcium Complex

- **Base Oil**

Mineral

- **Service Temp. °C**

-20°C to +150°C ( Max +220°C )

- **NLGI Grade**

1/2/3

- **Ball Weld Load**

5500 N



Manufactured  
under Germany  
technology license





# LubC, Grease LC Moly HD

LubC, Grease LC Moly HD is premium quality multi-purpose lithium calcium grease based on highly viscous mineral oil and particularly effective EP/AW additives suitable for use in all antifriction and large low-speed Rolling bearings subject to high loads subjected to high load and shock loading conditions. The incorporation of solid lubricants (%3 MoS<sub>2</sub> and graphite) imparts a high degree of wear protection to ensure reliable operation under starved lubrication conditions. Also suitable for the lubrication of pivoting bearings and plain bearings. It is recommended to use in stone crushers, screen machinery, mills, etc. in mines.

- Thickener**  
 Lithium Calcium
- Base Oil**  
 Mineral
- Service Temp. °C**  
 -20°C to +120°C ( Max +130°C )
- NLGI Grade**  
 1.5/2
- Ball Weld Load**  
 4000 N



Manufactured under Germany technology license



## LubC, Grease LC Moly SD

LubC, Grease LC Moly SD is premium quality multi-purpose lithium calcium grease based on highly viscous mineral oil and particularly effective EP/AW additives suitable for use in all antifriction and large low-speed Rolling bearings subject to high loads subjected to high load and shock loading conditions. The incorporation of solid lubricants (%3 MoS<sub>2</sub> and graphite) imparts a high degree of wear protection to ensure reliable operation under starved lubrication conditions. Also suitable for the lubrication of pivoting bearings and plain bearings. It is recommended to use in stone crushers, screen machinery, mills, etc. in mines.

- **Thickener**

Lithium Calcium

- **Base Oil**

Mineral

- **Service Temp. °C**

-20°C to +120°C ( Max +130°C )

- **NLGI Grade**

1.5/2

- **Ball Weld Load**

4300 N



Manufactured  
under Germany  
technology license 



## LubC, Grease CSplex

LubC, Grease CSplex is a calcium sulfonate complex thickened lubricating grease based on mineral oil. The grease contains antioxidants and corrosion inhibitors. It is recommended for use in industrial equipment operating at high temperatures or exposed to salt water which makes it a high performance premium grease. Excavator rigs, shovels, drills, etc. are among the applications of this type of grease in mines.

- **Thickener**

Calcium Sulfonate Complex

- **Base Oil**

Mineral

- **Service Temp. °C**

-20°C to +160°C ( Max +200°C )

- **NLGI Grade**

1/1.5/2

- **4 Ball Weld Load**

6500 N



Manufactured  
under Germany  
technology license





## LubC, Grease CSplex Plus

LubC, Grease CSplex Plus is a calcium sulfonate complex thickened lubricating grease based on mineral oil. The grease contains antioxidants and corrosion inhibitors. It is recommended for use in industrial equipment operating at high temperatures or exposed to salt water which makes it a high performance premium grease. Excavator rigs, shovels, drills, etc. are among the applications of this type of grease in mines.

- **Thickener**

Calcium - Sulfonate Complex

- **Base Oil**

Mineral

- **Service Temp. °C**

-20°C to +160°C ( Max +200°C )

- **NLGI Grade**

1/1.5/2

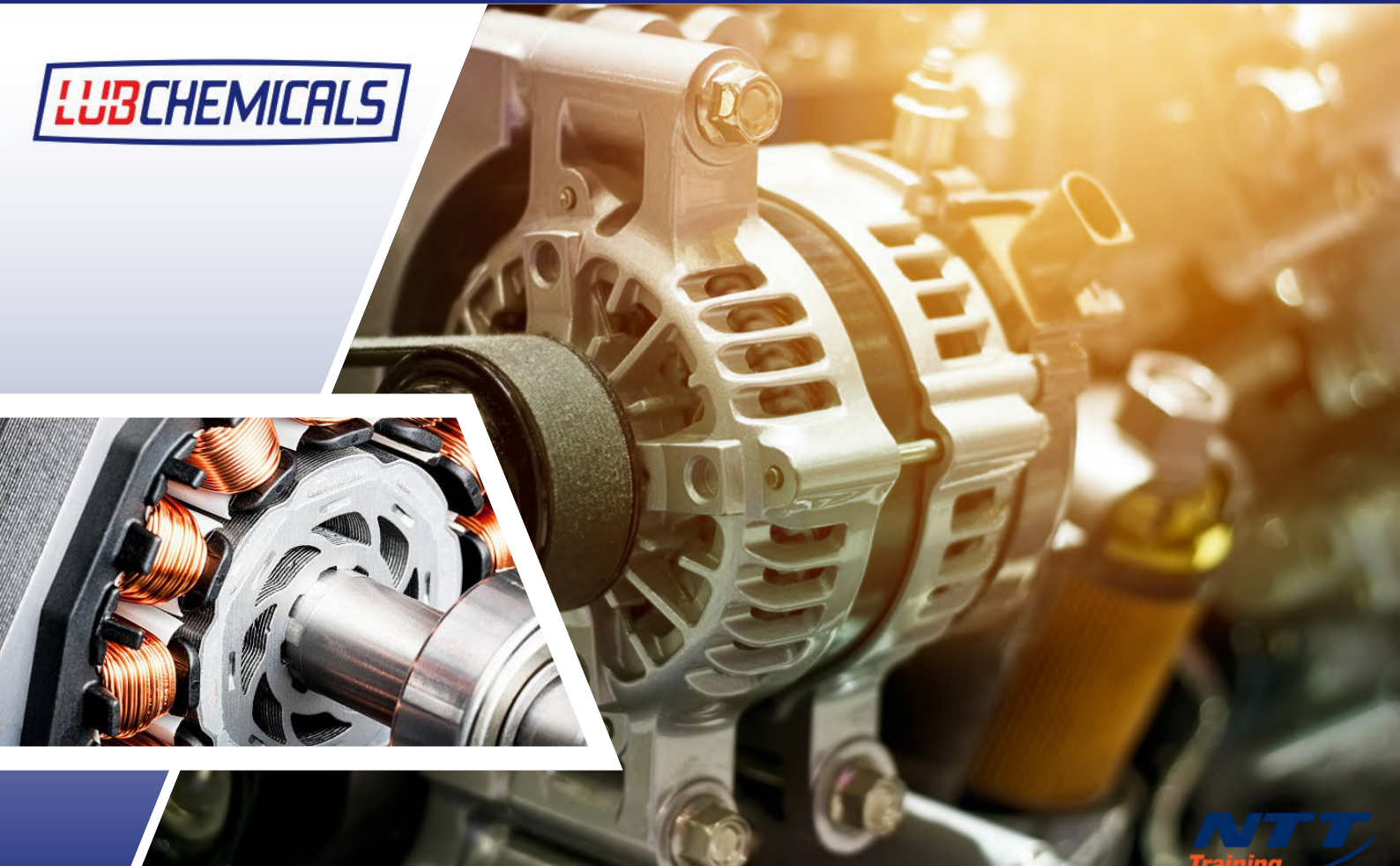
- **4 Ball Weld Load**

6800 N



Manufactured  
under Germany  
technology license





## LubC, Grease PU

LubC, Grease PU Plus is a thickened by polyurea base thickener. It is made from deeply refined mineral oil with anti-corrosion protection and anti-wear additives which gives good pumpability properties for use in the centralized lubrication systems of equipment operating in the steel industry, like continuous casting machines, continuous rolling machines and other high temperature friction points in the steel industry.

- **Thickener**

Poly urea

- **Base Oil**

Mineral

- **Base Oil VG**

100

- **Service Temp. °C**

-20°C to +200°C (MAX +220)

- **NLGI Grade**

1/1.5/2/3

- **4 Ball Weld Load**

2550 N



Manufactured  
under Germany  
technology license





## LubC, Grease PU Plus

LubC, Grease PU Plus is a thickened by polyurea base thickener. It is made from deeply refined mineral oil with anti-corrosion protection and anti-wear additives which gives good pumpability properties for use in the centralized lubrication systems of equipment operating in the steel industry, like continuous casting machines, continuous rolling machines and other high temperature friction points in the steel industry.

- **Thickener**  
Poly urea
- **Base Oil**  
Mineral
- **Base Oil VG**  
100
- **Service Temp. °C**  
-20°C to +200°C (MAX+220)
- **NLGI Grade**  
1.5/2/3
- **4 Ball Weld Load**  
2550 N



Manufactured  
under Germany  
technology license 





## LubC, Grease PU EP

LubC, Grease PU EP is thickened by polyurea base thickener. It is made from semi synthetic oil with extreme pressure and anti-wear additives which gives good pumpability properties for use in the centralised lubrication systems of equipment operating in the steel industry, like continuous casting machines, continuous rolling machines and other high temperature friction points in the steel industry.

- **Thickener**

Poly urea

- **Base Oil**

Semi Synthetic

- **Service Temp. °C**

-30°C to +290°C

- **NLGI Grade**

1/2

- **4 Ball Weld Load**

3000 N



Manufactured  
under Germany  
technology license





## LubC, Grease ALPlex OG

LubC, Grease ALPlex OG is aluminum complex saponified grease based on mineral oil. It contains fine grade graphite as well as designed for automatic spray lubrication of toothed wheels, gear rings, toothed racks and pinions of any kind under high pressure and temperature operations. It suits for lubrication of rotary furnaces or similar hot lubricating points even under dusty and wet conditions. This grease is recommended for lubrication in furnaces and rotary mills with high humidity and dust. They are also used in open gears and rack and pinion machines such as stone cutters, shovels, and trenchers.

- |  |   |
|--|---|
| ▪ <b>Thickener</b><br>AL Complex                                 | 0 / 0-00/00                               |
| ▪ <b>Base Oil</b><br>Mineral                                     | ▪ <b>4 Ball Weld Load</b><br>> 7000 N     |
| ▪ <b>Service Temp. °C</b><br>-20 °C to +160 °C<br>( Max +200°C ) | ▪ <b>FZG Test</b><br>> 12                 |
| ▪ <b>NLGI Grade</b>  | ▪ <b>Base Oil VG</b><br>500 , 1000 , 2500 |



Manufactured  
under Germany  
technology license 



## LubC, Paste CU

LubC, Paste CU is a premium quality paste based on mineral oil suitable for metal/metal combinations that are subjected to high temperatures and frictional contacts are free from lead or nickel. It is suitable for lubrication points with low speeds, subjected to high temperatures and corrosive effects, also requiring a low and constant coefficient of friction. If possible, clean the thread and used bolts with a wire brush. Spread an adequate amount of the paste on the contact areas in order to obtain a good seal. It is also suitable for the lubrication of electrically conductive parts, the lubrication of connection flanges in chemical, petrochemical, etc. units.

- **Thickener**

CU +Solids +Metal Powder +Mineral Oil

- **Service Temp. °C**

- 20 °C to +1100 °C

- **NLGI Grade**

2/3

- **Drop Point °C**

Non



Manufactured  
under Germany  
technology license 



## LubC, Paste S Plex 1100

LubC, Paste S Plex 1100 is a high temperature anti seize and brown paste containing composed of high quality base oils, mineral thickener, and metal powder as solid lubricant, suitable for conditions with high pressure and high temperature. It is free of solvents, nickel and chlorine, does not contain any compounds that embattle alloys. It is suitable for using in cylinder head screws, nozzle head screws, plastic injection molds and lubrication of connecting flanges in chemical and petrochemical units, etc. are suitable.

- **Thickener**

Thickener +Solids +Metal Powder +Mineral Oil

- **Service Temp. °C**

- 20 °C to +1100 °C

- **NLGI Grade**

1/2



Manufactured  
under Germany  
technology license

## Equivalent

LubChemicals	Equivalent	معادل ایرانی
<b>LubC, Hydraulic M 22</b>	Shell Tellus S2 MX 22	بهران هیدرولیک H22
<b>LubC, Hydraulic M 32</b>	Shell Tellus S2 MX 32	بهران هیدرولیک H32
<b>LubC, Hydraulic M 46</b>	Shell Tellus S2 MX 46	بهران هیدرولیک H46
<b>LubC, Hydraulic M 68</b>	Shell Tellus S2 MX 68	بهران هیدرولیک H68
<b>LubC, Hydraulic M 100</b>	Shell Tellus S2 MX 100	بهران هیدرولیک H100
<b>LubC, Hydraulic M 150</b>	Shell Tellus S2 MX 150	بهران هیدرولیک H150
<b>LubC, Hydraulic MZ 15</b>	Shell Tellus S3 M 15	بهران هیدرولیک HP15
<b>LubC, Hydraulic MZ 22</b>	Shell Tellus S3 M 22	بهران هیدرولیک HP22
<b>LubC, Hydraulic MZ 32</b>	Shell Tellus S3 M 32	بهران هیدرولیک HP32
<b>LubC, Hydraulic MZ 46</b>	Shell Tellus S3 M 46	بهران هیدرولیک HP46
<b>LubC, Hydraulic MZ 68</b>	Shell Tellus S3 M 68	بهران هیدرولیک HP68
<b>LubC, Hydraulic MZ 100</b>	Shell Tellus S3 M 100	بهران هیدرولیک HP100
<b>LubC, Hydraulic T 10</b>	Shell Tellus S2 VX 10	بهران هیدرولیک T10
<b>LubC, Hydraulic T 15</b>	Shell Tellus S2 VX 15	بهران هیدرولیک T15
<b>LubC, Hydraulic T 22</b>	Shell Tellus S2 VX 22	بهران هیدرولیک T22
<b>LubC, Hydraulic T 32</b>	Shell Tellus S2 VX 32	بهران هیدرولیک T32
<b>LubC, Hydraulic T 46</b>	Shell Tellus S2 VX 46	بهران هیدرولیک T46
<b>LubC, Hydraulic T 68</b>	Shell Tellus S2 VX 68	بهران هیدرولیک T68
<b>LubC, Hydraulic T 100</b>	Shell Tellus S2 VX 100	بهران هیدرولیک T100
<b>LubC, Hydraulic TZ 10</b>	Shell Tellus S3 VX 10	-
<b>LubC, Hydraulic TZ 15</b>	Shell Tellus S3 VX 15	-
<b>LubC, Hydraulic TZ 22</b>	Shell Tellus S3 VX 22	-
<b>LubC, Hydraulic TZ 32</b>	Shell Tellus S3 VX 32	-
<b>LubC, Hydraulic TZ 46</b>	Shell Tellus S3 VX 46	-
<b>LubC, Hydraulic TZ 68</b>	Shell Tellus S3 VX 68	-
<b>LubC, Hydraulic TZ 100</b>	Shell Tellus S3 VX 100	-
<b>LubC, Hydraulic TPlus 10</b>	Fuchs Renolin B 10 HVI	بهران هیدرولیک TX10
<b>LubC, Hydraulic TPlus 15</b>	Fuchs Renolin B 15 HVI	بهران هیدرولیک TX15

## Equivalent

LubChemicals	Equivalent	معادل ایرانی
<b>LubC, Hydraulic M 22</b>	Shell Tellus S2 MX 22	بهران هیدرولیک H22
<b>LubC, Hydraulic M 32</b>	Shell Tellus S2 MX 32	بهران هیدرولیک H32
<b>LubC, Hydraulic M 46</b>	Shell Tellus S2 MX 46	بهران هیدرولیک H46
<b>LubC, Hydraulic M 68</b>	Shell Tellus S2 MX 68	بهران هیدرولیک H68
<b>LubC, Hydraulic M 100</b>	Shell Tellus S2 MX 100	بهران هیدرولیک H100
<b>LubC, Hydraulic M 150</b>	Shell Tellus S2 MX 150	بهران هیدرولیک H150
<b>LubC, Hydraulic MZ 15</b>	Shell Tellus S3 M 15	بهران هیدرولیک HP15
<b>LubC, Hydraulic MZ 22</b>	Shell Tellus S3 M 22	بهران هیدرولیک HP22
<b>LubC, Hydraulic MZ 32</b>	Shell Tellus S3 M 32	بهران هیدرولیک HP32
<b>LubC, Hydraulic MZ 46</b>	Shell Tellus S3 M 46	بهران هیدرولیک HP46
<b>LubC, Hydraulic MZ 68</b>	Shell Tellus S3 M 68	بهران هیدرولیک HP68
<b>LubC, Hydraulic MZ 100</b>	Shell Tellus S3 M 100	بهران هیدرولیک HP100
<b>LubC, Hydraulic T 10</b>	Shell Tellus S2 VX 10	بهران هیدرولیک T10
<b>LubC, Hydraulic T 15</b>	Shell Tellus S2 VX 15	بهران هیدرولیک T15
<b>LubC, Hydraulic T 22</b>	Shell Tellus S2 VX 22	بهران هیدرولیک T22
<b>LubC, Hydraulic T 32</b>	Shell Tellus S2 VX 32	بهران هیدرولیک T32
<b>LubC, Hydraulic T 46</b>	Shell Tellus S2 VX 46	بهران هیدرولیک T46
<b>LubC, Hydraulic T 68</b>	Shell Tellus S2 VX 68	بهران هیدرولیک T68
<b>LubC, Hydraulic T 100</b>	Shell Tellus S2 VX 100	بهران هیدرولیک T100
<b>LubC, Hydraulic TZ 10</b>	Shell Tellus S3 VX 10	-
<b>LubC, Hydraulic TZ 15</b>	Shell Tellus S3 VX 15	-
<b>LubC, Hydraulic TZ 22</b>	Shell Tellus S3 VX 22	-
<b>LubC, Hydraulic TZ 32</b>	Shell Tellus S3 VX 32	-
<b>LubC, Hydraulic TZ 46</b>	Shell Tellus S3 VX 46	-
<b>LubC, Hydraulic TZ 68</b>	Shell Tellus S3 VX 68	-
<b>LubC, Hydraulic TZ 100</b>	Shell Tellus S3 VX 100	-
<b>LubC, Hydraulic TPlus 10</b>	Fuchs Renolin B 10 HVI	بهران هیدرولیک TX10
<b>LubC, Hydraulic TPlus 15</b>	Fuchs Renolin B 15 HVI	بهران هیدرولیک TX15

## Equivalent

LubChemicals	Equivalent	معادل ایرانی
<b>LubC, Comp P 68</b>	Shell Corena S2 P 68	بهران کمپرسور 68 VDL
<b>LubC, Comp P 100</b>	Shell Corena S2 P 100	بهران کمپرسور 100 VDL
<b>LubC, Comp P 150</b>	Shell Corena S2 P 150	بهران کمپرسور 150 VDL
<b>LubC, Comp P 220</b>	Shell Corena S2 P 220	بهران کمپرسور 220 VDL
<b>LubC, Comp PS 68</b>	Shell Corena S4 P 68	بهران کمپرسور PS 68
<b>LubC, Comp PS 100</b>	Shell Corena S4 P 100	بهران کمپرسور PS 100
<b>LubC, Comp PS 150</b>	Shell Corena S4 P 150	بهران کمپرسور PS 150
<b>LubC, Comp PS 220</b>	Shell Corena S4 P 220	بهران کمپرسور PS 220
<b>LubC,Gear HP 32</b>	Shell Omala S2 GX 32	بهران بردبار 32
<b>LubC,Gear HP 46</b>	Shell Omala S2 GX 46	بهران بردبار 46
<b>LubC,Gear HP 68</b>	Shell Omala S2 GX 68	بهران بردبار 68
<b>LubC,Gear HP 100</b>	Shell Omala S2 GX 100	بهران بردبار 100
<b>LubC,Gear HP 150</b>	Shell Omala S2 GX 150	بهران بردبار 150
<b>LubC,Gear HP 220</b>	Shell Omala S2 GX 220	بهران بردبار 220
<b>LubC,Gear HP 320</b>	Shell Omala S2 GX 320	بهران بردبار 320
<b>LubC,Gear HP 460</b>	Shell Omala S2 GX 460	بهران بردبار 460
<b>LubC,Gear HP 680</b>	Shell Omala S2 GX 680	بهران بردبار 680
<b>LubC,Gear HP 1000</b>	Shell Omala S2 GX 1000	بهران بردبار 1000
<b>LubC,Gear HP Plus 68</b>	Shell Omala F 68	بهران بردبار F 68
<b>LubC,Gear HP Plus 100</b>	Shell Omala F 1Shell Omala F 100	بهران بردبار F 100
<b>LubC,Gear HP Plus 150</b>	Shell Omala F 150	بهران بردبار F 150
<b>LubC,Gear HP Plus 220</b>	Shell Omala F 220	بهران بردبار F 220
<b>LubC,Gear HP Plus 320</b>	Shell Omala F 320	بهران بردبار F 320
<b>LubC,Gear HP Plus 460</b>	Shell Omala F 460	بهران بردبار F 460
<b>LubC,Gear HP Plus 680</b>	Shell Omala F 680	بهران بردبار F 680
<b>LubC,Gear HP Plus 1000</b>	Shell Omala F 1000	بهران بردبار F 1000
<b>LubC,Gear PA 32</b>	Mobil SHC 624	-
<b>LubC,Gear PA 46</b>	Mobil SHC 625	-

## Equivalent

LubChemicals	Equivalent	معادل ایرانی
<b>LubC, Gear PA 68</b>	Mobil SHC 626	-
<b>LubC, Gear PA 100</b>	Mobil SHC 627	-
<b>LubC, Gear PA 150</b>	Mobil SHC 629	بهران بردبار PS 150
<b>LubC, Gear PA 220</b>	Mobil SHC 630	بهران بردبار PS 220
<b>LubC, Gear PA 320</b>	Mobil SHC 632	بهران بردبار PS 320
<b>LubC, Gear PA 460</b>	Mobil SHC 634	بهران بردبار PS 460
<b>LubC, Gear PA 680</b>	Mobil SHC 636	بهران بردبار PS 680
<b>LubC, Gear PA 1000</b>	Mobil SHC 639	بهران بردبار PS 1000
<b>LubC, Gear PG 68</b>	Shell Omala S4 WE 68	-
<b>LubC, Gear PG 100</b>	Shell Omala S4 WE 100	بهران بردبار PG100
<b>LubC, Gear PG 150</b>	Shell Omala S4 WE 150	بهران بردبار PG150
<b>LubC, Gear PG 220</b>	Shell Omala S4 WE 220	بهران بردبار PG220
<b>LubC, Gear PG 320</b>	Shell Omala S4 WE 320	بهران بردبار PG320
<b>LubC, Gear PG 460</b>	Shell Omala S4 WE 460	بهران بردبار PG460
<b>LubC, Gear PG 680</b>	Shell Omala S4 WE 680	بهران بردبار PG680
<b>LubC, Gear PG 1000</b>	Shell Omala S4 WE 1000	بهران بردبار PG1000
<b>LubC, Turbine T22</b>	-	-
<b>LubC, Turbine T32</b>	Shell Turbo Oil T32	بهران توربین 32
<b>LubC, Turbine T46</b>	Shell Turbo Oil T46	بهران توربین 46
<b>LubC, Turbine T68</b>	Shell Turbo Oil T68	بهران توربین 68
<b>LubC, Turbine T100</b>	Shell Turbo Oil T100	بهران توربین 100
<b>LubC, Turbine T Plus 22</b>	-	-
<b>LubC, Turbine T Plus 32</b>	-	-
<b>LubC, Turbine T Plus 46</b>	-	-
<b>LubC, Turbine T Plus 68</b>	-	-
<b>LubC, Turbine T Plus 100</b>	-	-
<b>LubC, Diesel HD 10W40</b>	Shell Rimula R6 LM 10W40	بهران اکسترا توربو دیزل 10W40
<b>LubC, Diesel HD 15W40</b>	Shell Rimula R6 LM 15W40	بهران اکسترا توربو دیزل 15W40



## Equivalent

LubChemicals	Equivalent	معادل ایرانی
<b>LubC, Diesel HD 20W40</b>	Shell Rimula R1 Multi 20w40	بهران توربو دیزل 20W50
<b>LUBC, DIESEL HD 20W50</b>	Shell Rimula R4X 20W50	بهران توربو دیزل 20W50
<b>LubC, Diesel SD 15W40</b>	Shell Rimula R4X 15W40	بهران سوپر توربو دیزل 15W40
<b>LubC, Diesel SD 20W40</b>	-	-
<b>LubC, Diesel SD 25W50</b>	-	-
<b>LubC, Spin 5</b>	Shell Morlina S2 BL 5	-
<b>LubC, Spin 10</b>	Shell Morlina S2 BL 10	بهران درفش 10
<b>LubC, Spin 15</b>	Shell Morlina S2 BL 15	-
<b>LubC, Spin 22</b>	Shell Morlina S2 BL 22	-
<b>LubC, Spin 32</b>	Shell Morlina S2 BL 32	بهران درفش 32
<b>LubC, Spin 46</b>	Shell Morlina S2 BL 46	بهران درفش 46
<b>LubC, Spin 68</b>	Shell Morlina S2 BL 68	بهران درفش 68
<b>LubC, Spin 100</b>	Shell Morlina S2 BL 100	بهران درفش 100
<b>LubC, Spin 150</b>	Shell Morlina S2 BL 150	بهران درفش 150
<b>LubC, Spin 220</b>	Shell Morlina S2 BL 220	بهران درفش 220
<b>LubC, Spin 320</b>	Shell Morlina S2 BL 320	بهران درفش 320
<b>LubC, Spin 460</b>	Shell Morlina S2 BL 460	بهران درفش 460
<b>LubC, ATF 2</b>	Shell Spirax S2 ATF DII	بهران اتوماتیک II
<b>LubC, ATF 3</b>	Shell Spirax S3 ATF MD3	بهران اتوماتیک III
<b>LubC, ATF 4</b>	-	-
<b>LubC, ATF 5</b>	-	-
<b>LubC, ATF 6</b>	-	-
<b>LubC,Gear TF 75W80</b>	Shell Spirax S3 AX 75W80	بهران سمند ویژه 75W80
<b>LubC,Gear TF 75W90</b>	Shell Spirax S3 AX 75W90	بهران سمند ویژه 75W90
<b>LubC,Gear TF 80W90</b>	Shell Spirax S3 AX 80W90	بهران سمند ویژه 80W90
<b>Lub C,Gear TF 85W90</b>	Shell Spiral S3 AX 85W90	بهران سمند ویژه 85W90
<b>LubC,Gear TF 85W140</b>	Shell Spirax S3 AX 85W140	بهران سمند ویژه 85W140
<b>LubC,Gear TF 85W250</b>	-	-

## Equivalent

LubChemicals	Equivalent	معادل ایرانی
LubC,Gear TF 90W	-	MB90
LubC,Gear TF 140W	-	-
LubC, Vaccum Pomp	-	-
LubC, WRL 00	-	-
LubC,Grease L 1	Shell Gadus S2 V100- 1	بهران یاقوت 1
LubC,Grease L 2	Shell Gadus S2 V100- 2	بهران یاقوت 2
LubC,Grease L 3	Shell Gadus S2 V100- 3	بهران یاقوت 3
LubC,Grease L EP 000	Shell Gadus S2 V220- 000	-
LubC,Grease L EP 00	Shell Gadus S2 V220- 00	-
LubC,Grease L EP 0	Shell Gadus S2 V220- 0	-
LubC,Grease L EP1	Shell Gadus S2 V220- 1	بهران یاقوت EP1
LubC,Grease L EP2	Shell Gadus S2 V220- 2	بهران یاقوت EP2
LubC,Grease L EP3	Shell Gadus S2 V220- 3	بهران یاقوت EP3
LubC,Grease LC2	Shell Gadus S2 V220- AC 2 -2	-
LubC,Grease LC HD2	Shell Gadus S2 V220- AC 2 -2	-
LubC,Grease LC SD2	Shell Gadus S2 V220- AC 2 -2	-
LubC,Grease L Plex SPA HV	-	-
LubC,Grease L Plex SPA HV Plus	-	-
LubC,Grease L Plex SPA MV	-	-
LubC,Grease L Plex SPA MV Plus	-	-
LubC,Grease L Plex 1	Shell Gadus S3 V100- 1	-
LubC,Grease L Plex 2	Shell Gadus S3 V100- 2	-
LubC,Grease L Plex 3	Shell Gadus S3 V100- 3	-
LubC,Grease L Plex Plus1	-	-
LubC,Grease L Plex Plus2	-	-
LubC,Grease L Plex Plus3	-	-
LubC,Grease L Plex EP1	Shell Gadus S3 V220 C1	-
LubC,Grease L Plex EP2	Shell Gadus S3 V220 C2	Behtam Multiple Plex EP2 HV

## Equivalent

LubChemicals	Equivalent	معادل ایرانی
LubC,Grease L Plex EP3	Shell Gadus S3 V220 C3	-
LubC,Grease L Plex HD 1	Shell Gadus S3 V460 -1	-
LubC,Grease L Plex HD 2	Shell Gadus S3 V460 - 2	-
LubC,Grease C 1	Shell Gadus S3 V460 - 3	-
LubC,Grease C 2	-	گریس بهران لعل-گریس پارس شاسی
LubC,Grease C 3	-	-
LubC,Grease L Plex HD 3	-	-
LubC,Grease C EP1	-	-
LubC,Grease C EP2	-	-
LubC,Grease C EP3	-	-
LubC,Grease CSD1	-	-
LubC,Grease CSD2	-	-
LubC,Grease CPlexEP1	-	بهران زمرد
LubC,Grease CPlex EP2	Bruplex CS 2 EP	بهران زمرد
LubC,Grease CPlex EP3	-	بهران زمرد
LubC,Grease CSD3	-	-
LubC,Grease CPlex SD1	-	-
LubC,Grease CPlex SD2	-	-
LubC,Grease CPlex SD3	-	-
LubC,Grease LMoly HD1	Shell Gadus S2 V220- AD1	-
LubC,Grease LMoly HD2	Shell Gadus S2 V220- AD2	-
LubC,Grease LMoly HD3	Shell Gadus S2 V220- AD3	-
LubC,GreaseLPlexMolyHD2	Shell Gadus S3 V460 XD 2	-
LubC,GreaseLPlexMolyHD3	Shell Gadus S3 V460 XD 3	-
LubC,Grease LC Plex HD1	-	-
LubC,Grease LC Plex HD2	-	-
LubC,Grease LC Plex HD3	-	-
LubC,Grease LCMolySD1.5	Kluberlub BE 41 - 1501	-

## Equivalent

LubChemicals	Equivalent	معادل ایرانی
LubC,Grease CSPlexPlus1.5	-	-
LubC,Grease CSPlex1	Total Ceran HV1	-
LubC,Grease CSPlex2	Total Ceran HV2	-
LubC,Grease CSPlexPlus1	-	-
LubC,Grease CSPlexPlus2	-	-
LubC,Grease PU 1	Shell Gadus S3 T100 -1	
LubC,Grease PU 1.5	Shell Gadus S3 T100 -1.5	-
LubC,Grease PU 2	Shell Gadus S3 T 100 -2	-
LubC,Grease PU 3	Shell Gadus S3 T 100 -3	-
LubC,Grease PU Plus 1.5	Bechem Berutox M 21 KN 1.5	-
LubC,Grease PU Plus 2	Bechem Berutox M 21 KN 2	-
LubC,Grease PU Plus 3	Bechem Berutox M 21 KN 3	-
LubC,Grease PU EP 1	-	-
LubC,Grease PU EP 1.5	-	-
LubC,Grease PU EP 2	-	-
LubC,Grease PU EP 3	-	-
LubC,GreaseALPlexOG500	Behem Brulit GA 400	-
LubC,GreaseALPlexOG1000	Behem Brulit GA 800	-
LubC,GreaseALPlexOG2500	Behem Brulit GA 2500	-
LubC, HTF Plus 22	Shell Heat Transfer Oil S2 22	-
LubC, HTF Plus 32	Shell Heat Transfer Oil S2 32	بهران حرارت 32
LubC, HTF Plus 46	Shell Heat Transfer Oil S2 46	-
LubC, HTF Plus 68	Shell Heat Transfer Oil S2 68	بهران حرارت 68
LubC, HTF Plus 100	Shell Heat Transfer Oil S2 100	بهران حرارت 100
LubC, Paste CU	-	-
LubC, Paste S Plex 1100	Molykote HSC Plus-Molykote 1000	-

## Our products are certified to meet all necessary requirements

LUBCHEMICALS understands that above issue is key to the development of the organization which this policy establishes the following main points:

1- Continuous improvement of the quality in products and services, environmental management system and safety system.

2- Fulfilment of the existing legislation.

3- Training of employees and stakeholders as an essential element for the development of the organization and achieving full integration and participation.

4- Meeting the needs of our customers, achieving our own personal satisfaction, and getting to consolidate and improve our competitiveness and our expansion in the market by:

- Prioritize error prevention rather than correction.
- Enhancing production planning to maximize the performance of the facilities.
- Providing the necessary resources for the improvement of process control.
- Minimize residues, improving the maintenance and cleanliness of the plant.

5- To develop our activity with the utmost respect for the protection for the environment:

- Identification and secure the proper management of environmental aspects.
- Minimize waste.
- Pollution prevention, and when not possible, minimize the environmental impact.
- Incorporate environmental criteria into the business management.

6- Ensuring safety protection at work:

- Identify and prevent occupational hazards.
- Having the appropriate facilities, equipment and tools.
- Encourage coordination with the staff for the risk management.
- Incorporating safety criteria into the management of the business itself.

LUBCHEMICALS wishes to promote this policy and encourages all the organization and other parties concerned to comply with it.

## Services

On a basic rule our engineers support customers and distributors with all sorts of technical topics.

- LUBCHEMICALS Product advices
- Optimization of lubrication consumptions and intervals
- Rationalization of products the number of products being used
- Technical engineering services
- Used oil analysis program
- Technical consulting while site visiting



Professional Lubrication



Rembrandtstr. 80 | 70567 Stuttgart-Germany  
Tel. 0049 711 235450 | 0049 711 235464 | Fax:0049 711 2360553  
[WWW.lubchemicals.com](http://WWW.lubchemicals.com) | [lube@lubchemicals.com](mailto:lube@lubchemicals.com)